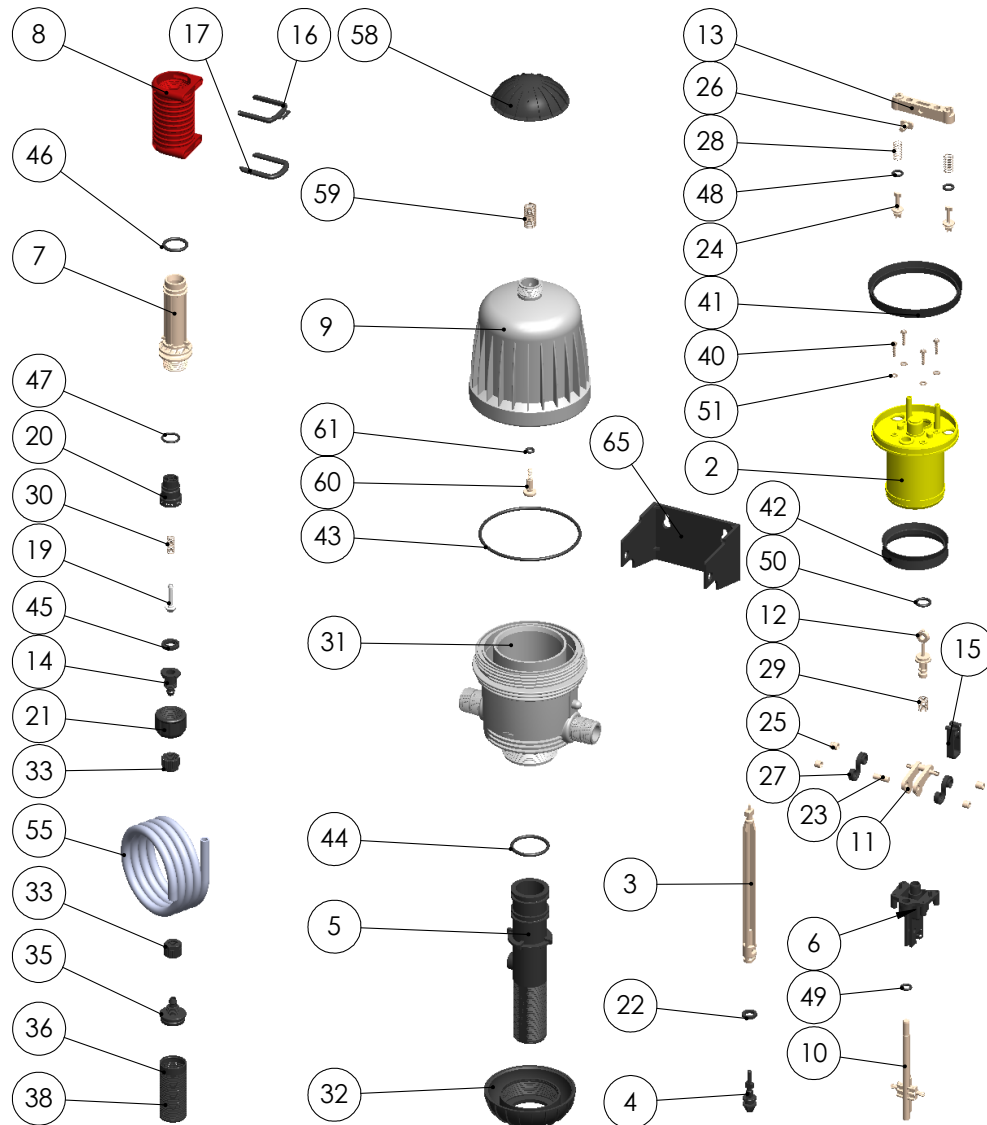


# MixRite 2.5

2802020P001

Air Release ,0.3-2%,PO

6.3.2016



06/03/2016

No.	Part	Cat.No
2	PISTON BODY LFR	712536016003102
3	BAR-MEDICATORS W/O BYPASS II	712536030180803
4	PISTON 2%	712536030152704
5	CYLINDER SUPPORT	712536030161305
6	BASE 50% F.G	712536030162206
7	CYLINDER 2%	712536030181007
8	ADJUSTMENT SLEEVE RED	712536036180708
9	COVER	712536030157309
10	EJECTOR PIN	712536030167110
11	CYLINDER TOGGLE	712536030167211
12	CENTER VALVE	712536030147712
13	VALVE BRIDGE	712536030147513
14	CHECK VALVE BASE #2501 ***	712536016103239
15	CYLINDER TOGGLE FRAME	712536030149915
16	LATCH	712536030167916
17	NUT LATCH	712536030168017
19	CHECK VALVE PIN WHITE #2501***	712536043019219
20	SPIDER***	712536013013220
21	CHECK VALVE NUT RED***	712536012013221
22	EJECTOR/SUCTION SEAL 2%	712538000032022
23	CYLINDER AXLE	712536030162523
24	LOWER CYLINDER VALVE	712536030153124
25	EJECTOR SLIDE	712536030167125
26	PIN	712536030167026
27	MECHANISM SPRING PLASTIC (2)	712536000000191
28	LOWER CYLINDER VALVE SPRING	712538060797428
29	UPPER VALVE SPRING	712538060797429
30	CHECK VALVE SPRING 4 HSTY	712538013070430
31	BODY	712536030162031
32	CYLINDER SUPPORT NUT	712536030161532
33	HOSE NUT 10MM	712532046150002
35	SUCTION FILTER BODY 10MM	712536030011035
36	SUCTION FILTER BODY	712536030013036
38	FILTER BODY WEIGHT	712538060801038
40	SCREW	712538060351640
41	UPPER PISTON SEAL (all models)	712536030175141
42	LOWER PISTON SEAL (all models)	712536030175142
43	COVER "O" RING 2-243	712538022430243
44	CYLINDER SUPPORT "O" RING 2-220	712538022200244
45	FLAT SEAL #2501***	712538000023248
46	CYLINDER "O" RING 2-211 PO	712538022110246
47	CHECK VALVE LOWER"O"RING 2-114***	712538021140247
48	O RING VITON 2-108"	712538021080048
49	O RING VITON 2-109	712538021090049
50	CENTER VALVE "O" RING 10 x 3	712538001030250
51	SS DISC	712538060351641
55	SUCTION TUBE 10mm (5' SECTION)	712536030001055
58	AIR RELEASE COVER	712536030161658
59	AIR RELEASE SPRING	712538060000059
60	AIR RELEASE SCREW	712536030284360
61	AIR RELEASE "O" RING	712538060210761
65	MOUNTING BASE	712536030162765