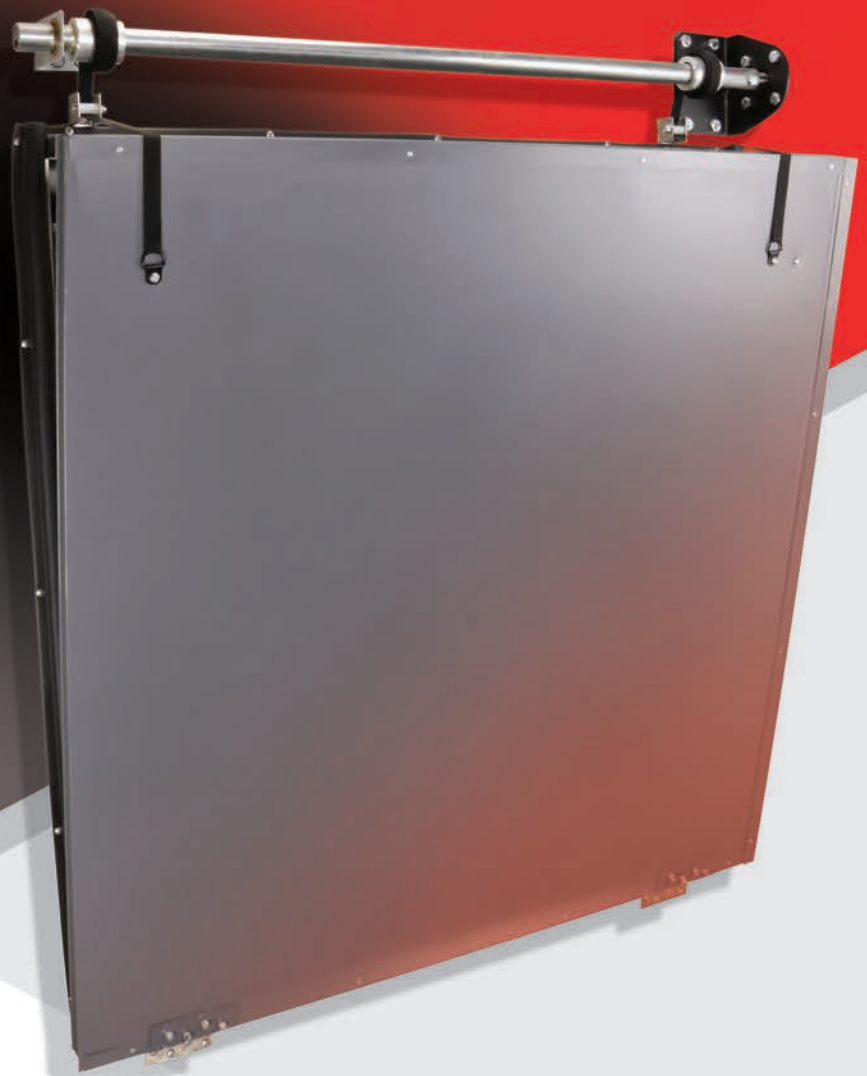




## Tunnel Doors

Tunnel Doors with the Strap and Pipe drive system are an affordable ventilation solution that delivers precise long-term operation while simultaneously reducing air leakage for significant energy savings.



# Dependable Operation. Tighter Seal. Better Insulation.

The curtains and tunnel doors used in poultry houses have a history of increasing producers' energy costs and maintenance requirements. Curtains lack insulation and require frequent replacement. Traditional tunnel door actuation systems allow air leakage, as the cables stretch under the stress of negative static pressure, and require frequent maintenance and adjustment. If cables fail, heavy doors can fall and damage equipment.

Diversified has simplified tunnel ventilation and extended product longevity with our lightweight Tunnel Door, controlled with a maintenance-free Strap and Pipe drive system that delivers reliable, precise control. By replacing cable with a military-grade polyester non-stretch strap, the need for constant adjustments is eliminated. Plus, the powder-coated galvanized steel shutter doors are insulated with 2 inches of expanded polystyrene foam to deliver an R9 value that reduces energy costs. This closed-cell foam does not absorb moisture and therefore retains its R9 insulation value over time.

2 INCH THICK GALVANIZED STEEL  
DOOR WITH CLOSED-CELL EXPANDED  
POLYSTYRENE FOAM

TONGUE AND GROOVE ASSEMBLY

STRAP AND PIPE DRIVE SYSTEM



2 YEAR WARRANTY

## TUNNEL DOOR FEATURES

## BENEFITS



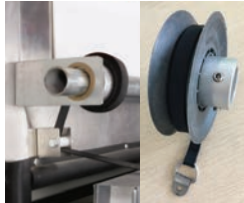
Powder-coated galvanized steel door and trim

Corrosion resistant for long-life performance



2 inch closed-cell expanded polystyrene foam

Provides R9 insulation value for significantly reduced energy costs



Maintenance-free polyester Strap and Pipe drive system with aluminum hub and stainless steel set screws, D ring and attachment bracket

Eliminates need to frequently adjust or replace cables



1 inch EPDM sponge seal

EDPM sponge seal installs easily using galvanized roofing nails



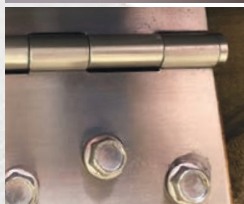
45 inch doors connect using tongue and groove design, secured with self-taping stainless steel metal screws

Easy to install doors to any customized length



Swedged-end pipes in 19.5 foot lengths with pre-drilled holes and grade 8 bolts

Pipes bolt together for easy installation and allow for customized lengths



Durable 304 stainless steel hinges used on lightweight doors

Stainless steel hinges provide durable performance while lightweight design simplifies installation

## TUNNEL DOOR TECHNICAL SPECIFICATIONS

<b>Width</b>	45 1/4 inch doors with tongue and groove connectors provide variable lengths
<b>Height</b>	Available in 4 foot, 5 foot and 6 foot
<b>Color</b>	Standard door color is gray; white doors available upon request for bulk orders
<b>Drive system</b>	G3 250 Door machine is used to actuate Strap and Pipe drive system. Strap and Pipe drive system can be purchased separately.

**Diversified Agriculture LLC**  
556 Industrial Way West  
Eatontown, NJ 07724

732.363.2333  
Toll Free: 1.800.348.6663  
Fax: 732.905.7696

**DiversifiedAg.com**



**DIVERSIFIED**