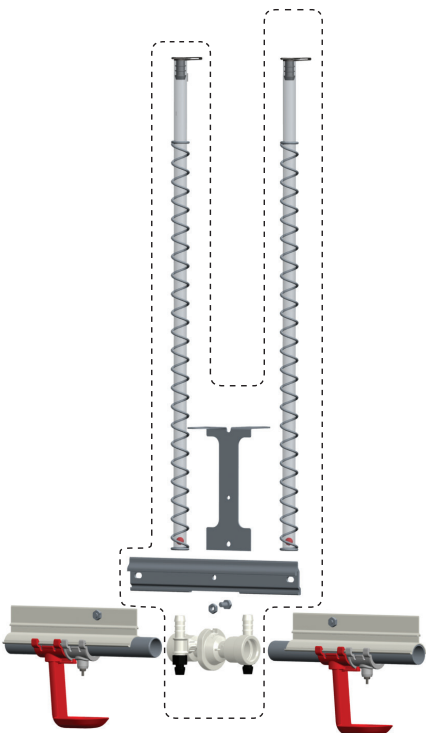
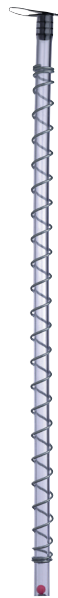


PLASSON Slope Regulator Installation Instructions

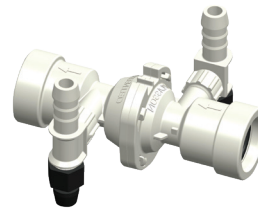
- Ensure that a filter unit is installed at the inlet of the system.
- Before assembling the line ensure that the pipes are clean and free of wood shavings, PVC chips and any other type of dirt.
- Before assembling the slope regulator assemble nipple line and flush the line at high pressure for 10 minutes.
- The Slope Regulator should be installed at intervals of height differentials as follows:
10 cm model 10-12 cm (4"-5").
15 cm model 15-18 cm (6"-7").
30 cm model 30-33 cm (12"-13").
- The Slope Regulator is installed between two sections, replacing the normal fitting.
- Ensure that the Slope Regulator is connected in the correct direction - the arrow on the Slope Regulator indicates the direction of the water flow.
- The connecting piece must be fitted into the groove on top of the Slope Regulator to ensure that the Slope Regulator does not revolve freely when installed in place.
- Slide the sight tube stand on the sight tubes from above. The sight tube stand should be attached to the "flat" side of the connecting piece. The nut should be on the sight tube stand side.
- In freezing conditions, the line must be drained.
- To drain the line, open the cap at the base of the pressure indicator on the upstream end of the Slope Regulator.



PLASSON Slope Regulator 15cm (Complete)
cat. no. 2205671



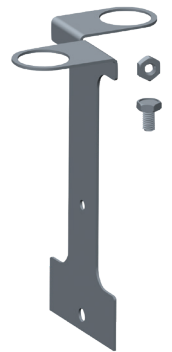
Pressure Indicator 60cm
cat. no. 2205436



PLASSON Slope Regulator
cat. no. 2205668



Connecting Piece for Slope Regulator
cat. no. 2205067



Sight tube stand
cat. no. 2205176