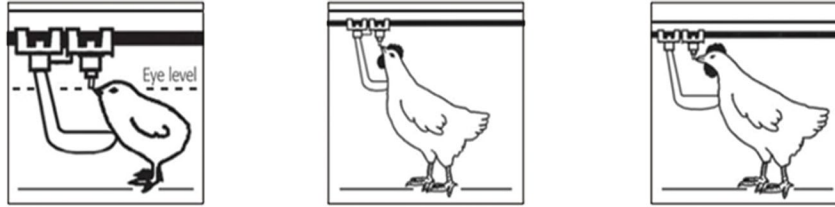


Gray Nipple with Tray

Operation Guidelines

Proper line height throughout the entire flock is **essential** to water pressure management:



Proper column pressure should be based on proper line height and **water volume in the tray**:



Pressure too low or
line too high

Perfect

Pressure too high or
line too low*

*With Proper Line Height & suggested column pressure water should not fill the entire bottom of trays

Managing water levels in the trays will prevent this water from saturating your litter

	Placement	Day 14	Day 21	Day 28	Day 35
Winter	3-4"	3-5"	4-6"	4-8"	5-10"
Summer	3-4"	3-6"	5-8"	6-10"	8-14"
Extreme Winter	3-4"	3-4"	3-5"	4-6"	4-7"

Suggested Water on Demand Boost:

Pressure boost procedures:

- Optimal boost can range from 25-100% of normal operating pressure.
- Cold weather boost should range between 25-50%

Duration:

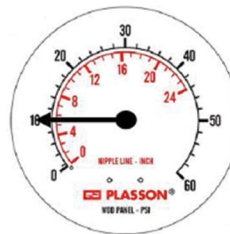
- Boost 1-3 times per day during heaviest periods of water consumption.
- Boost 15 up to 120 min



WOD Pro



Line Pressure



Max Winter Boost



Max Summer Boost

* Do not exceed 50% wintertime or 100% summertime boost for optimal litter management conditions.