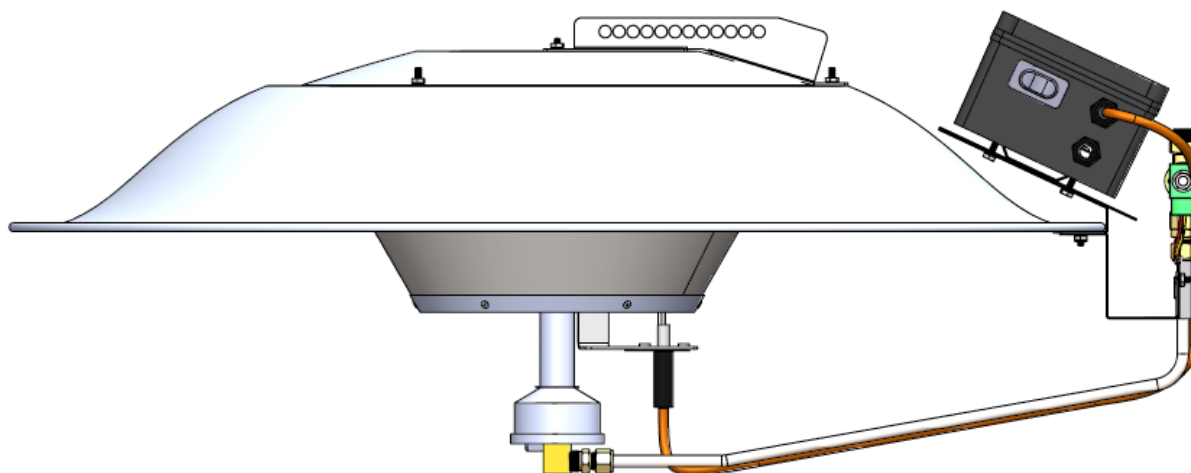


Installation, Operation and Service Instructions

INFRARED BROODER



SERIES BRHS



WARNING

Improper installation, adjustment, alteration, service or maintenance can cause property damage, injury or death. Read the installation, operation and maintenance instructions thoroughly before installing or servicing this heater.

FOR YOUR SAFETY

Do not store or use gasoline or other flammable vapors and liquids in the vicinity of this or any other appliance.
If you smell gas:

1. Open windows
2. Don't touch electrical switches
3. Extinguish any open flame
4. Immediately call your gas supplier

OWNER

Retain this Manual & ensure available for service. Improper installation, adjustment, alteration, service or maintenance can cause injury, death or property damage.
Read the installation, operation and service instructions thoroughly before installing or servicing this heater

INSTALLER

Provide Manual to Owner upon completion of installation!

Read and thoroughly understand these Instructions before attempting any installation

Canada: 563 Barton Street, Stoney Creek, Ontario L8E 5S1

USA: 315 N Madison Street, Fortville, IN 46040

www.superiorradiant.com

WARNING: FIRE OR EXPLOSION HAZARD

Maintain clearance to combustible constructions as further specified in this manual. Failure to do so could result in a serious fire hazard. Heaters should not be located in hazardous atmospheres containing flammable vapors or combustible dusts. Signs should be provided in storage areas specifying maximum safe stacking height.

CAUTION: FIRE OR EXPLOSION HAZARD

This heater is equipped with an automatic ignition device. Do not attempt to light the burner by hand. Failure to comply could result in a serious fire and personal injury hazard.

CAUTION: SERVICE LIFE RISK

Do not install heater in atmosphere containing halogenated hydrocarbons or other corrosive chemicals. Failure to do so may lead to premature heater failure and invalidation of the warranty.

WARNING – California Proposition 65

This appliance, its related accessories and by-product of operation, contain chemicals known to the State of California to cause cancer and birth defects or other reproductive harm.
For more information go to www.P65Warnings.ca.gov.

CONTENTS

CONTENTS	3
INTRODUCTION.....	4
INSTALLATION CODES	4
GENERAL SPECIFICATIONS	5
INPUT	5
GAS SUPPLY	5
ELECTRIC SUPPLY.....	5
VENTILATION	5
SHIPPING CONFIGURATION	5
HIGH ALTITUDE RATINGS	5
DIMENSIONAL CHARTS	5
BROODER PARTS.....	6
GENERAL ASSEMBLY	7
PACKAGE CONTENTS.....	8
CLEARANCE TO COMBUSTIBLES	9
ASSEMBLY.....	10
INSTALLATION.....	13
VENTING & COMBUSTION AIR	14
GENERAL REQUIREMENTS	14
GAS PIPING	15
ELECTRICAL CONNECTIONS	17
WIRING DIAGRAM	17
LIGHTING AND SHUTDOWN INSTRUCTIONS.....	18
STARTING SEQUENCE OF OPERATION	18
FUEL CONVERSION KIT	18
MAINTENANCE	21
TROUBLESHOOTING.....	22
REPLACEMENT PARTS	23
WARRANTY.....	24

INTRODUCTION

Superior Radiant Products is a company in the infrared heating industry founded on the principles of product quality and customer commitment. Quality commitments are evidenced by superior design, a regard for design detail and an upgrade of materials wherever justifiable. Customer commitment is apparent through our ready responses to market demands and a never-ending training and service support program for and through our distributor network.

The series BRHS is an infrared brooder for agricultural installations.

IMPORTANT

The manufacturer's instructions, the layout drawing, national and local codes and ordinances, and all applicable standards which apply to gas piping and electrical wiring comprise the basic information needed to complete the installation. These criteria must be thoroughly understood before proceeding.

Only personnel who have been trained and understand all applicable codes should undertake the installation. Manufacturer representatives are Factory Certified in the service and application of this heater and can be called on for helpful suggestions about installation.

Installation Codes

Installations must comply with local codes, or in their absence, the latest edition of the national regulations and procedures as listed below.

This heater complies with IAS U.S. No. 8-94 (Draft No. 2) and CAN-1-2-20-M85.

General Installation and Gas Codes

Heaters must be installed only for use with the type of gas appearing on the rating plate, and the installation must conform to the National Fuel Gas Code, ANSI Z223.1/NFPA 54 in the US and CSA B149.1 Installation Code in Canada.

Not for use in residential dwellings, refer to Rating plate.

Gas Supply Lines

Gas supply pipe sizing must be in accordance with the National Fuel Gas Code, ANSI Z223.1/NFPA 54 in the US and CSA B149.1 Installation Code in Canada.

A 1/8" NPT plugged tap must be installed in the gas line connection immediately upstream of the burner farthest from the gas supply meter to allow checking of system gas pressure.

Electrical

All heaters must be electrically grounded in accordance with the National Electric Code, ANSI/NFPA 70 in the US, and the Canadian Electric Code, CSA C22.1 in Canada, and must comply with all local requirements.

GENERAL SPECIFICATIONS

Input

36,000 BTU/hr

Gas Supply

Inlet Pressure

Natural Gas: 5 psig

Propane Gas: 5 psig

Manifold Pressure

Natural Gas: 5 psig

Propane Gas: 5 psig

Inlet Connection

Natural Gas or Propane: 1/8 NPT Female

Electric Supply

120 VAC, 60 HZ, 0.3 Amp, 10ft cord with grounded 3 prong plug

Ventilation

For indoor installation only and unvented. Minimum ventilation required is 160 CFM per brooder.

Shipping configuration

This heater ships from the factory for use with LP gas. To convert from propane to natural gas, refer to Gas Conversion Instructions within this manual.

High Altitude Ratings

36,000 BTU/hr. For Canada 0-2000 feet above sea level. In the U.S. 0-2000 feet above sea level, anything over 2000 feet is derated by 4% per thousand feet above sea level as per National Fuel Gas Code.

DIMENSIONAL CHARTS

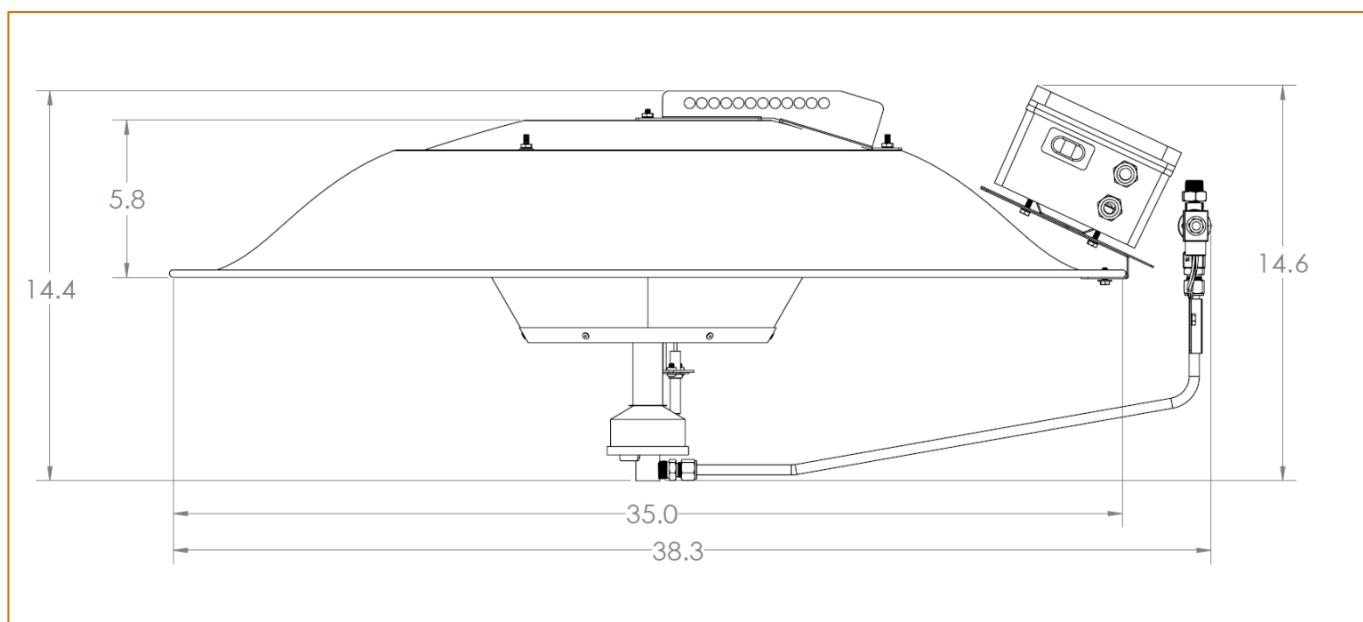


Figure 1: Overall Dimensional Information

BROODER PARTS

Get to know your heater parts (list referencing Figure 2).

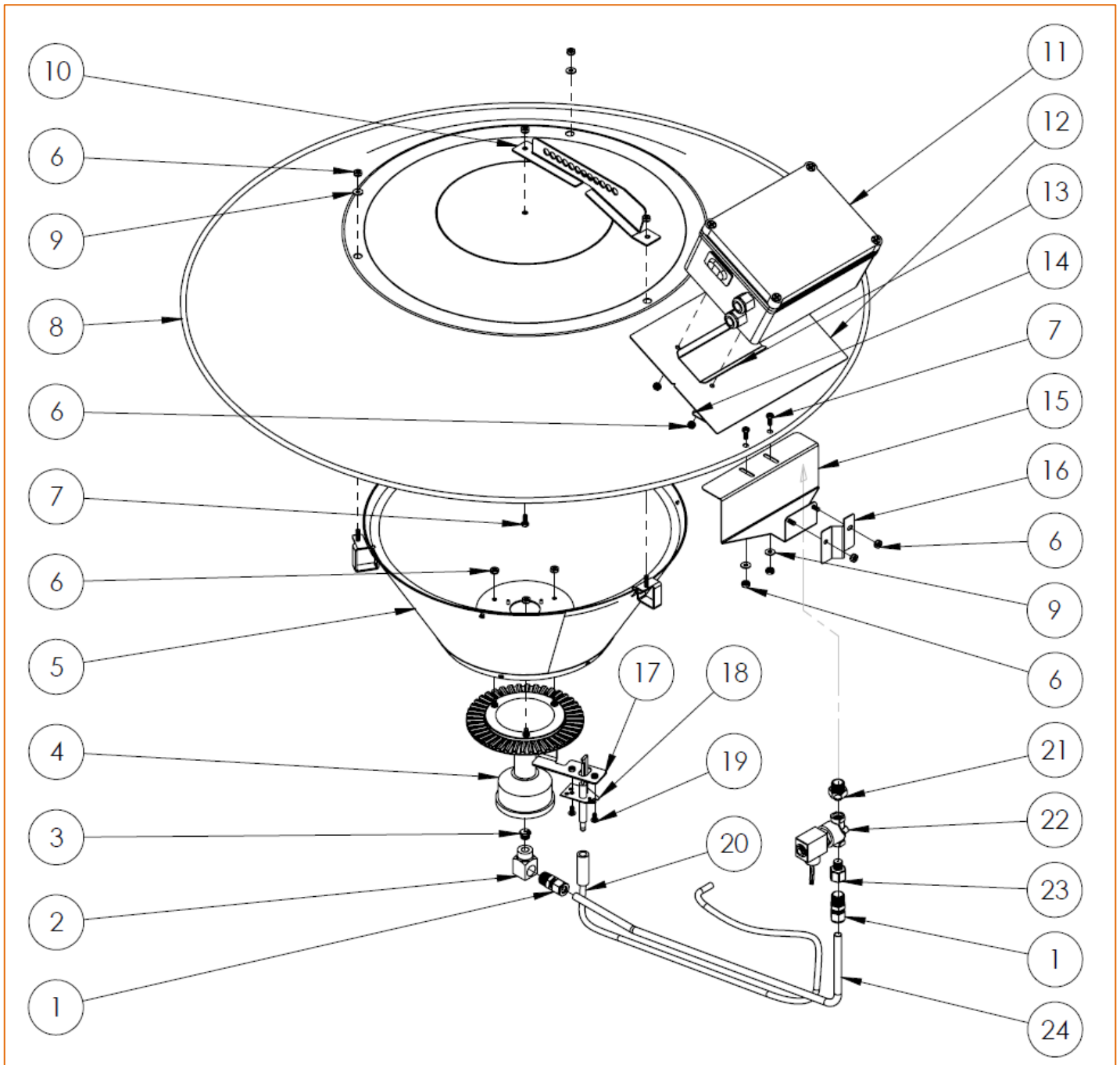


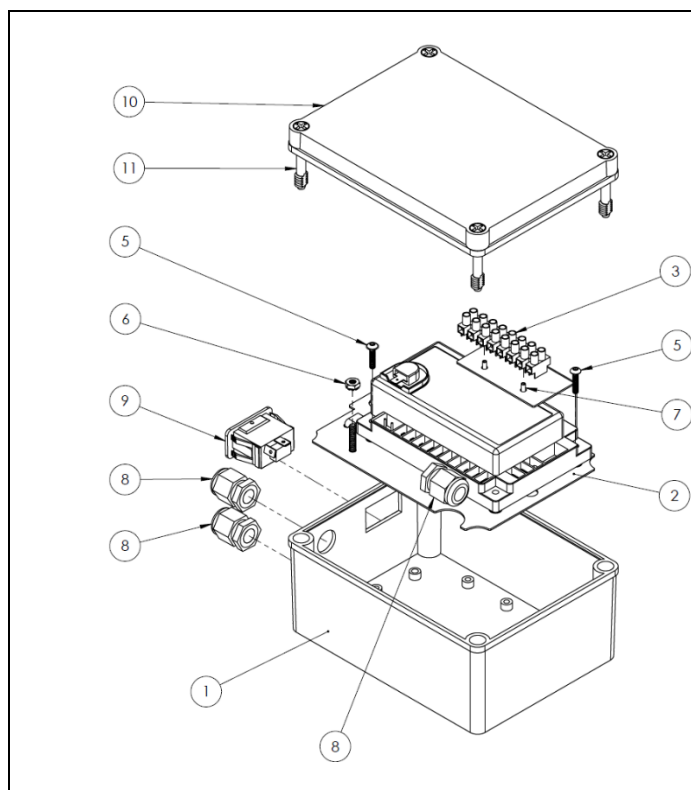
Figure 2: General Overview

General Assembly

Refer to Figure 2 for component identification.

No.	Qty	PN	Description
1	2	BG006	Brass Tube Fitting, 3/8 NPT to 3/8 Pressure Fitting Female
2	1	BG027	Brass Orifice Adapter
3	1	UG032/ UG029	Orifice (Propane/ Natural Gas)
4	1	BG010	Brooder Burner
5	1	BS071	Emitter Cone Assembly
6	10	CH190	NUT, S/S #10-24 KEPS
7	3	CH314	Bolt S/S #10-24 x 1/2" Hex Cap
8	1	BS013	Reflector
9	5	CH315	Washer Flat S/S #10 x 0.5" OD
10	1	BS069	Hanging Bracket Assembly
11	1	BE036	Brooder Smart Control Box Assembly (BRHS)
12	1	BS089	Heat Shield Controls,

No.	Qty	PN	Description
13	1	BS091	Spacer Controls
14	1	BS068	Heat Shield Controls
15	1	BS066	Heat Shield
16	1	BS067	Manifold Mounting Bracket
17	1	BS005	Electrode Bracket
18	1	BE003	Electrode PSE-GF26
19	2	CH118	Screw #8-32 x 3/8" Phillips S/S
20	1	BE004	Ignition Cable 35"
21	1	BG019	Bushing 9/16-18 LHTx1/8NPT with Screen (Not included)
22	1	BG014	ASCO Gas Shutoff Valve 120V/60Hz
23	1	BG029/ BG028	Adaptor, 3/8 FPT x 1/8 NPT with Orifice (Propane/Natural Gas)
24	1	BS026	3/8" S/S Gas Tubing



No.	QTY	PN	DESCRIPTION
1	1	BE006	Controls Enclosure
2	2	BS064	Mounting Plate
3	1	CE445	Terminal Strip
4	1	CE444	Module
5	2	EH069	Screw 8-32
6	1	CH190	Keps Nut 10-24
7	2	CH255	Rivet
8	3	CH262	Liquid Tight Fitting
9	1	BE007	Rocker Switch
10	1	-	Lid
11	1	-	Lid Screw
12	1	CE385	Power Cord, 10ft, 120V (not shown)

Figure 3: Control Box (BE036) Components

PACKAGE CONTENTS

The radiant brooder is sold in packages of six or one, depending on the customer's quantity order. Verify that you have received all heater components included with the unit. The unit is packaged as sub-assemblies in kits, listed below. To purchase replacement parts, refer to page 23.

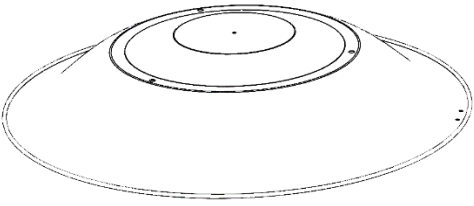
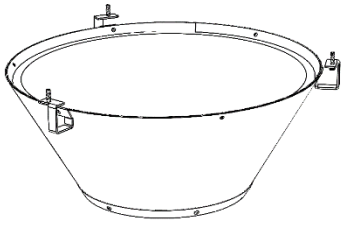
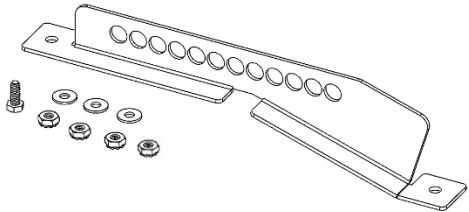
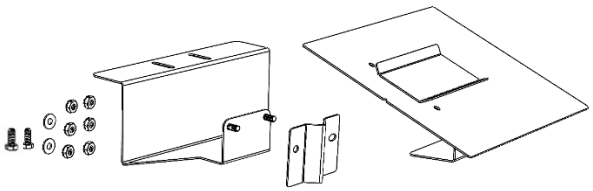

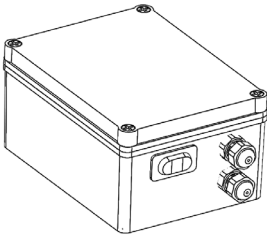
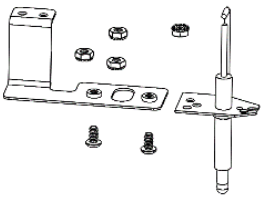
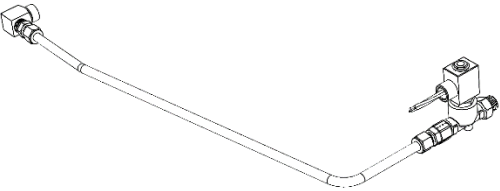
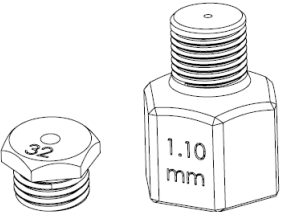
	
BS013 - Reflector	
	
BS071 - Emitter Cone Assembly	BK001 - Hanger Kit
	
BK018 - Heat Shield Kit	BG010 - Burner
	
BE036 - Control Box Kit	BK004 - Electrode Assembly Kit
	
BK020 - Manifold Assembly BRH	BK024 - Natural Gas Conversion Kit

Figure 4

CLEARANCE TO COMBUSTIBLES

Minimum clearances to combustible materials shall be measured from outer surface of the reflector.

In addition to this, it is very important to observe the minimum clearance to combustibles at all times to avoid any possibility of property damage or personal injury.

Combustible materials are considered to be wood, compressed paper, plant fibres, plastics, Plexiglas or other materials capable of being ignited and burned. Such materials shall be considered combustible even though flame-proofed, fire-retardant treated or plastered.

The stated clearance to combustibles represents a surface temperature of 90°F (50°C) above room temperature. Building materials with low heat tolerance (i.e., **plastics, vinyl siding, canvas, tri-ply, etc.**) may be subject to degradation at lower temperatures.

It is the installer's responsibility to ensure that adjacent materials are protected from deterioration.

A	B	C
66" (1676mm)	36" (915mm)	15" (380mm)

Table1: Minimum clearance to combustible materials

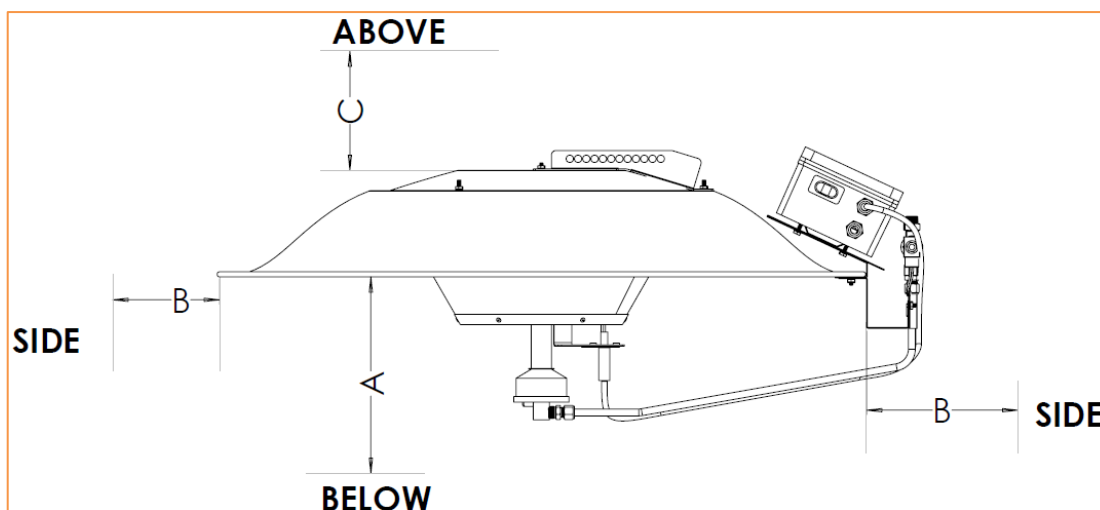


Figure 5: Clearance to Combustible

ASSEMBLY

1. Before assembling, check that all components are included in the package.
2. Fasten the burner assembly to the cone assembly using three (3) #10-24 hex locknuts and attach the igniter bracket to the burner assembly using a #10-24 hex locknut, as shown in Fig. 6.

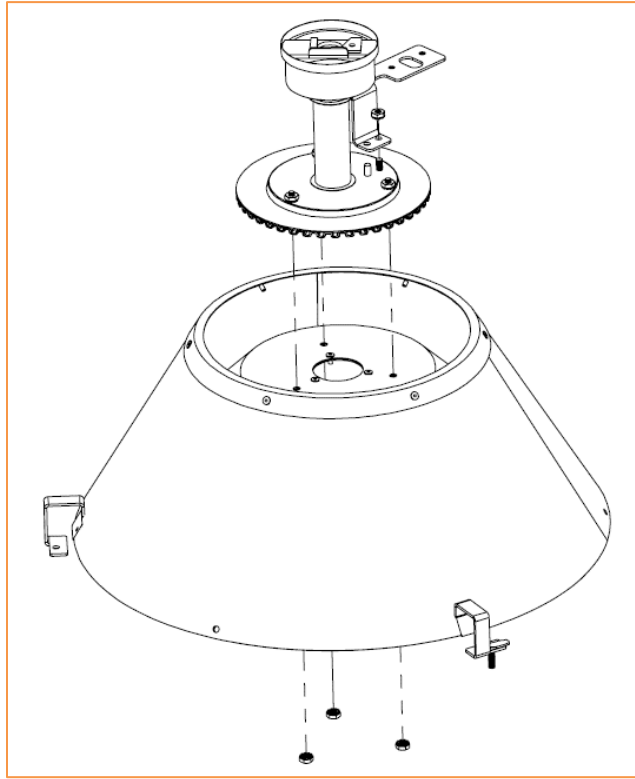


Figure 6

3. Fasten the hanging bracket to the centre hole of the reflector, using a #10-24 S/S bolt and appropriate washer and locknut. Align the other end of the hanging bracket with the alignment holes on the reflector. Attach the cone assembly to the reflector, aligning the igniter bracket with the alignment holes, using #10-24 hex nuts and #10 flat washers.

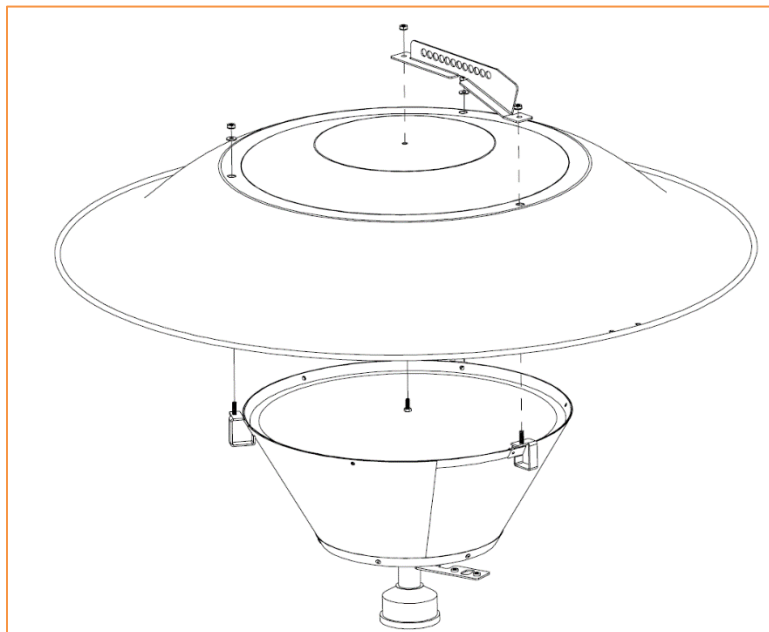


Figure 7

4. Attach the heat shield and control box mounting bracket to the reflector at the alignment holes, using two (2) #10-24 S/S bolts, nuts and washers.
5. Attach the gas manifold assembly by securing the T-clamp over the tube, covering up to the gas fitting. Insert the orifice block into the bottom of the burner and use the swivel clamp to hold it in place.

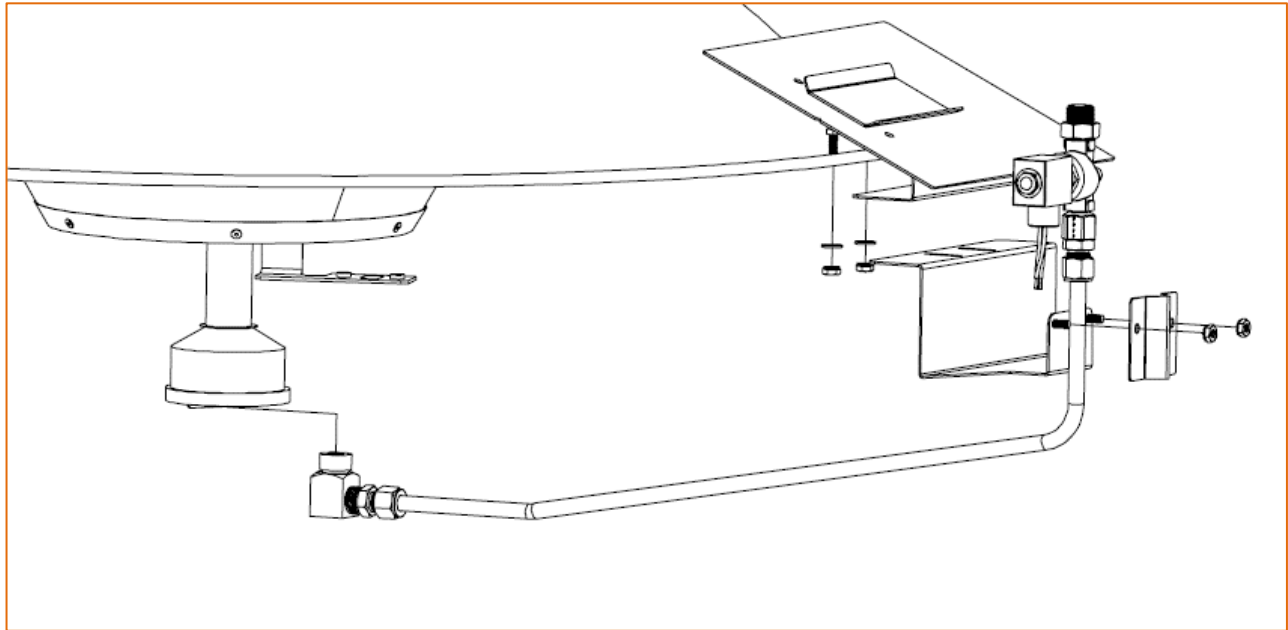


Figure 8

6. Attach the igniter to its bracket with two (2) #8-32 Phillips pan head screws.

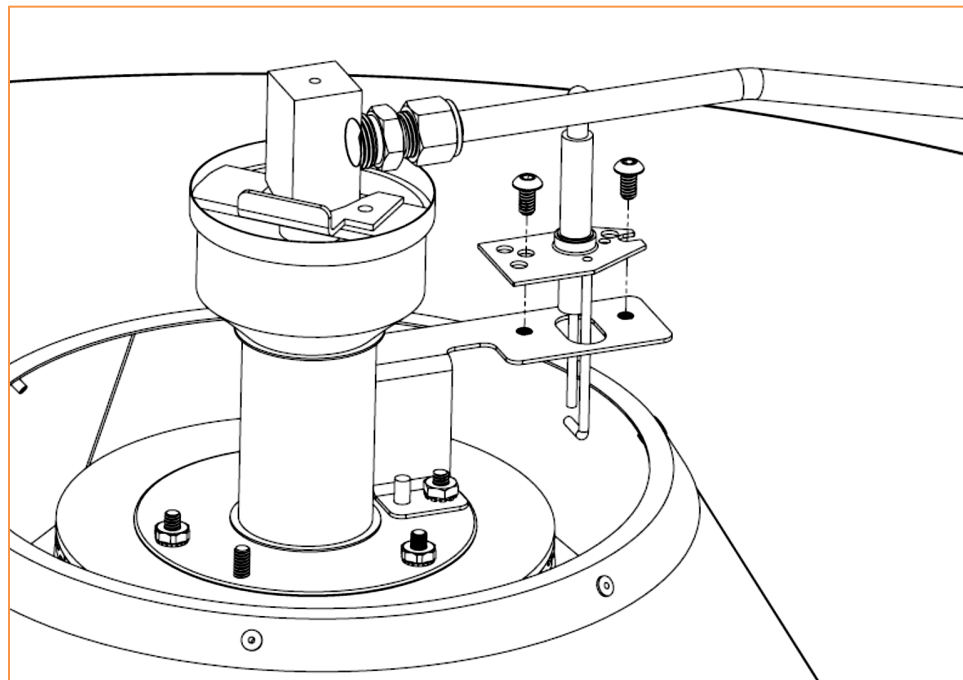


Figure 9

7. Mount the control box onto the bracket, securing it with two (2) #10-24 locknuts.

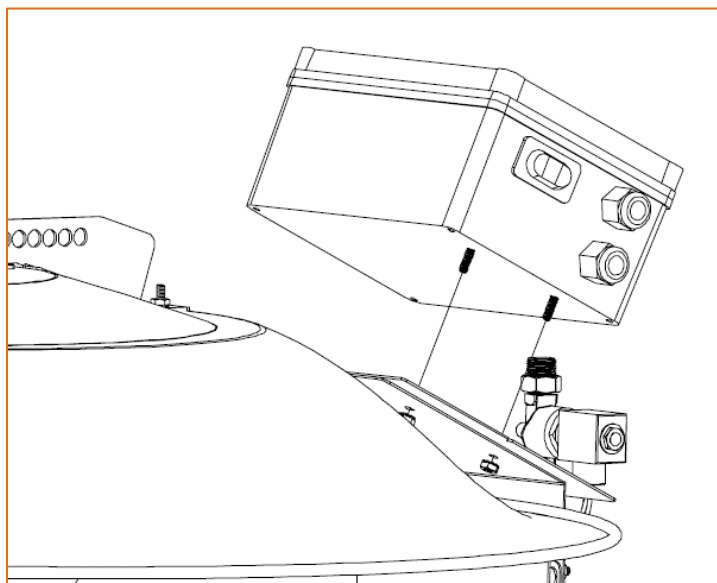


Figure 10

8. Attach the wiring as shown in the wiring diagram (see **ELECTRICAL CONNECTIONS** section below). Pull the ignition cable through the top cable gland and plug it into the igniter, then secure the boot over the igniter. After attaching the ignition cable to the igniter, secure the cable to the gas tube with zip ties.
9. The two red wires from the gas valve, as well as the line and neutral wires from the power supply, connect to the terminal block inside the control box. Remove the #10-24 nut from the ground stud and secure the ground wires from the gas valve and power supply to the ground stud. Tighten the #10-24 nut on the ground stud.

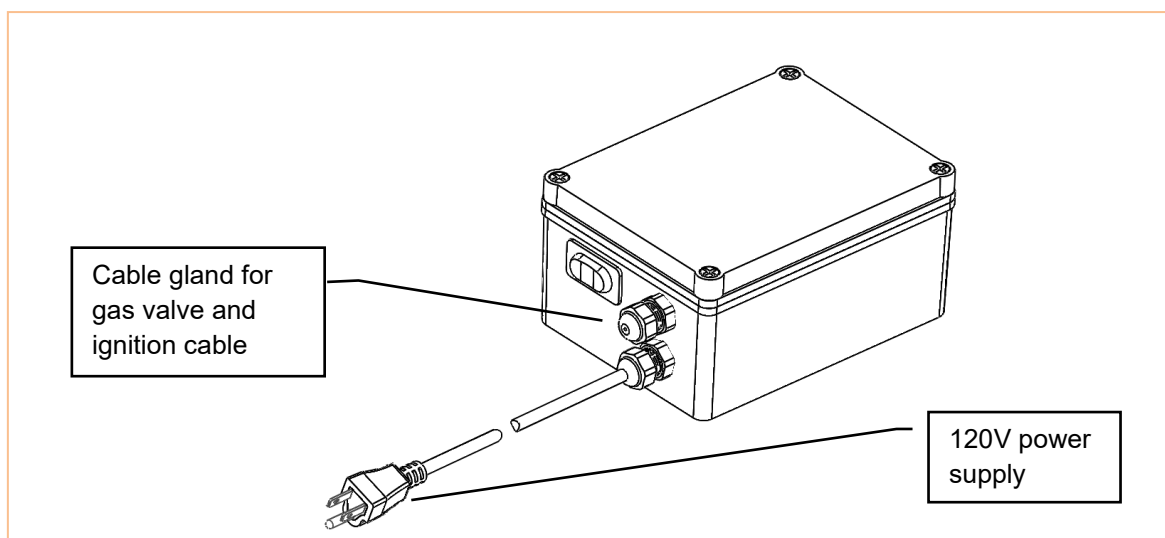


Figure 11

10. Check the assembly to make sure there are no loose parts before proceeding with the installation.

INSTALLATION

WARNING

NEVER USE THE GAS HOSE AS A SAFETY CHAIN

1. Hang the brooder at the appropriate height above the floor (litter) level, approximately 65"-75" (1650mm-1900mm). When using a winch, use a cable or chain suitable for the weight of each brooder. **DO NOT USE ROPE.**
2. Connect a safety chain from every brooder to a rigid structure.
3. Connect the gas line and electrical supply to each brooder.
4. Position the brooder so that the control side is approximately 1/2" (13mm) lower from the other side to prevent damaging.

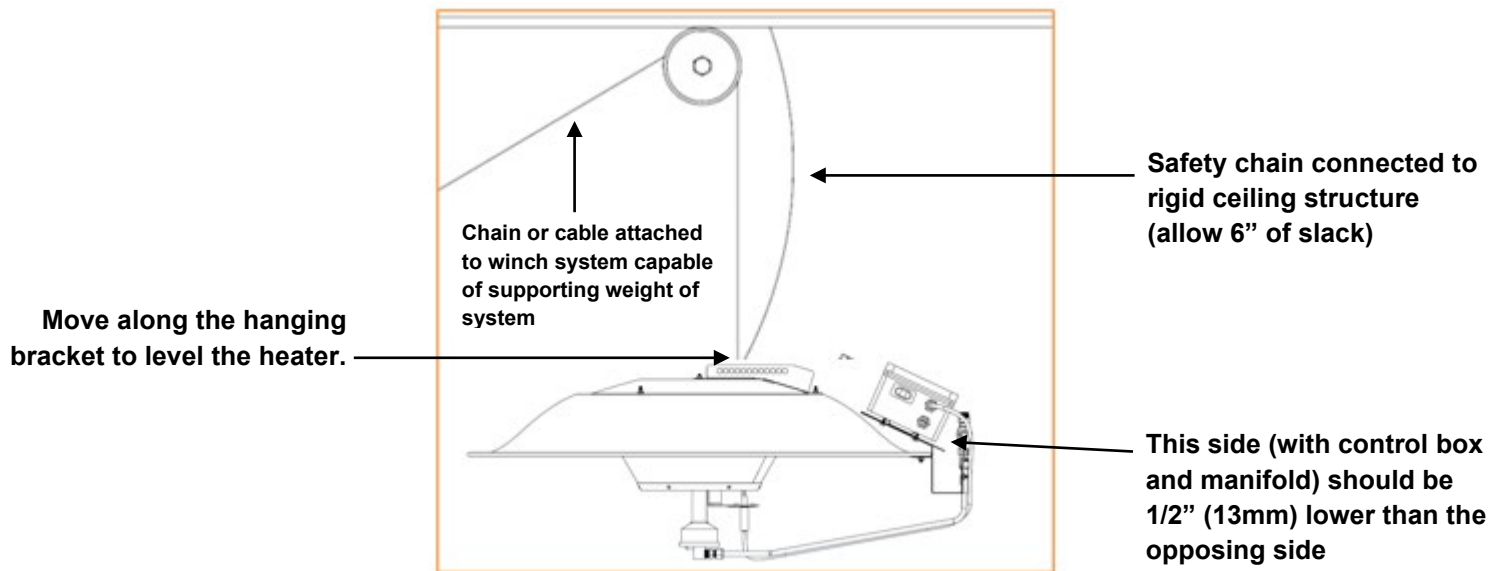


Figure 12: Hanging Diagram

VENTING & COMBUSTION AIR

General Requirements

ATTENTION VENTILATION REQUIREMENTS

- BE SURE THE AIR INLET GRILLS, LOUVERS AND DAMPERS ARE INSPECTED REGULARLY AND THAT THEY ARE CLEAR AND FREE OF DUST, DIRT, SNOW, ICE, FROST AND OTHER FOREIGN MATERIAL SO THAT AIR MAY FREELY ENTER INTO THE BUILDING TO PROVIDE ADEQUATE COMBUSTION AND VENTILATING AIR.
 - FOR PROPER AND SAFE OPERATION OF THE BROODER INSTALLATION, THERE SHALL BE PROVIDED A COMBINED INFILTRATION AND NATURAL AND MECHANICAL VENTILATION RATE OF NOT LESS THAN $\frac{1}{4}$ S.C.F.M. (standard cubic foot per minute) PER BIRD.
-
- Refer to the National Fuel Gas Code, ANSI Z223.1 (NFPA 54) in the US and CSA B149.1 Installation Code in Canada, as well as all local requirements for general venting guidance.
 - The Nation Fuel Gas Code requires a minimum of 4 CFM per 1000 Btu/hr of brooder input for ventilation. This requirement means that a total of 160 CFM is required per brooder.

FOR YOUR SAFETY

- Exhaust fans must be operating on an appropriate cycle when heating the building to avoid high concentration of carbon monoxide and water vapor.

WARNING

- **Carbon Monoxide** is an odorless and poisonous gas. Extended exposure to carbon monoxide may lead to death. Early signs of carbon monoxide poisoning resemble the flu, including headaches, dizziness and/or nausea. If you experience these signs, GET FRESH AIR IMMEDIATELY. Have the brooders serviced as soon as possible and check the ventilation in the house.

GAS PIPING

- The gas meter and service must be sufficiently large to supply gas to the connected building gas load including the heating equipment and any other gas fired equipment. Additionally, the gas distribution piping must be designed according to local and national ordinances.
- Gas supply pipe sizing must be in accordance with the National Fuel Gas Code, ANSI Z223.1 (NFPA 54) in the US and CSA B149.1 Installation Code in Canada.
- Before connecting brooders to the gas supply system, verify that high pressure testing of the system has been completed. Failure to do so may expose the brooder components to damaging high pressure, requiring replacement of key components.
- Pipe joint compounds must be resistant to the action of liquefied petroleum (LP) gases

Flexible gas connectors of approved type must be installed as shown in Figure 13, in one plane, and without sharp bends, kinks or twists. Failure to install the gas connection in the approved manner will result in a hazardous and potentially deadly situation due to the movement of the heater in the normal course of operation.

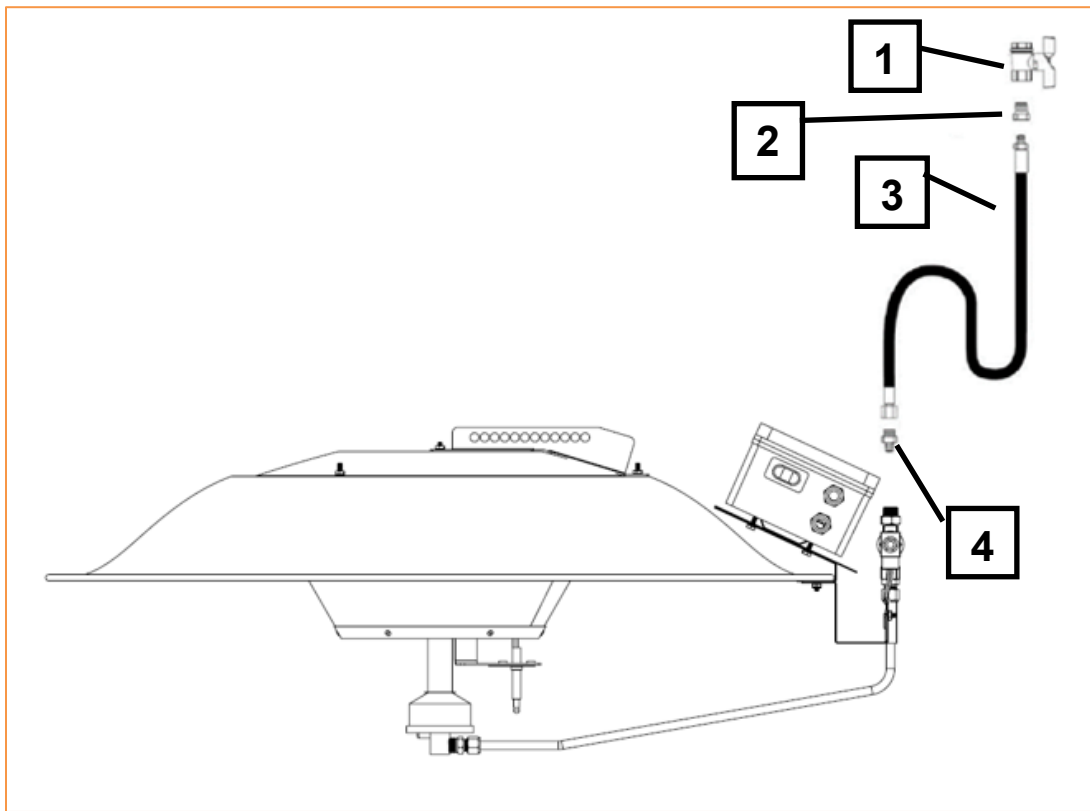
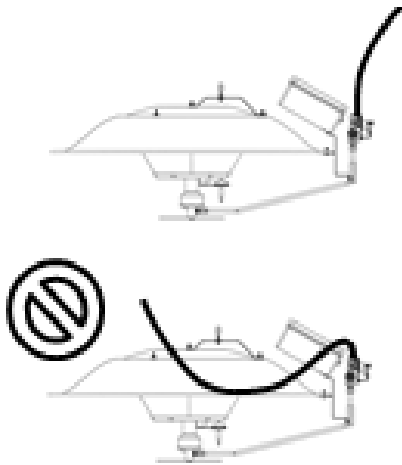


Figure 13: Flexible Gas Connections

The following components are not included. They are available in the Accessories Kit BRH40 (BK008)

NO.	QTY	PART NUMBER	DESCRIPTION
1	1	CG011	VALVE, MANUAL BALL ½"
2	1	BG017	Hex Bushing 1/2NPT x 1/4 FPT Galvanized
3	1	BG018	HOSE, 1/4"IDx6FT with LH Welding Swivel x 1/4NPT
4	1	BG019	Bushing 9/16-18 LHTx1/8 NPT with screen

WARNING



FIRE HAZARD

Tighten flexible gas hose and components securely.

Flexible gas hoses must be installed without any twists or kinks in them. **DO NOT** allow the hose to touch any part of the brooder canopy during operation

Failure to do so may result in death, serious injury or property damage

- Install a manual shut-off valve in the gas piping to each brooder. This will allow service of individual brooders without having to shut down the entire gas supply system.
- A sediment trap must be installed in the supply line in the lowest spot prior to connecting to the heater. The trap length should be at least three (3) inches long. Periodically remove the cap from the trap and drain any accumulation of dirt and/or water.

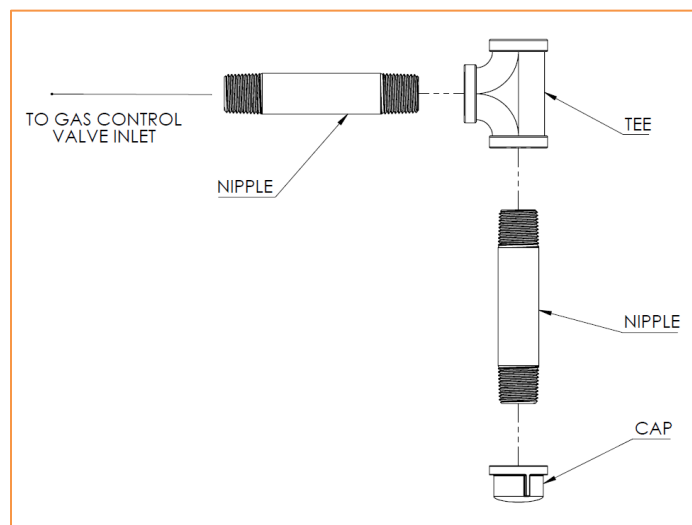


Figure 14: Sediment Trap

- After all gas connections and adjustments are made, check all gas connections for leaks using a heavy soapsuds solution.

WARNING

DO NOT USE AN OPEN FLAME OF ANY SORT TO TEST FOR LEAKS!

ELECTRICAL CONNECTIONS

Wiring diagram

All fields wiring to the brooder must be done in accordance with the National Electric Code, ANSI/NFPA 70 in the USA, and the Canadian Electric Code, CSA C22.1 in Canada, and must comply with all local requirements.

The brooder must be electrically grounded.

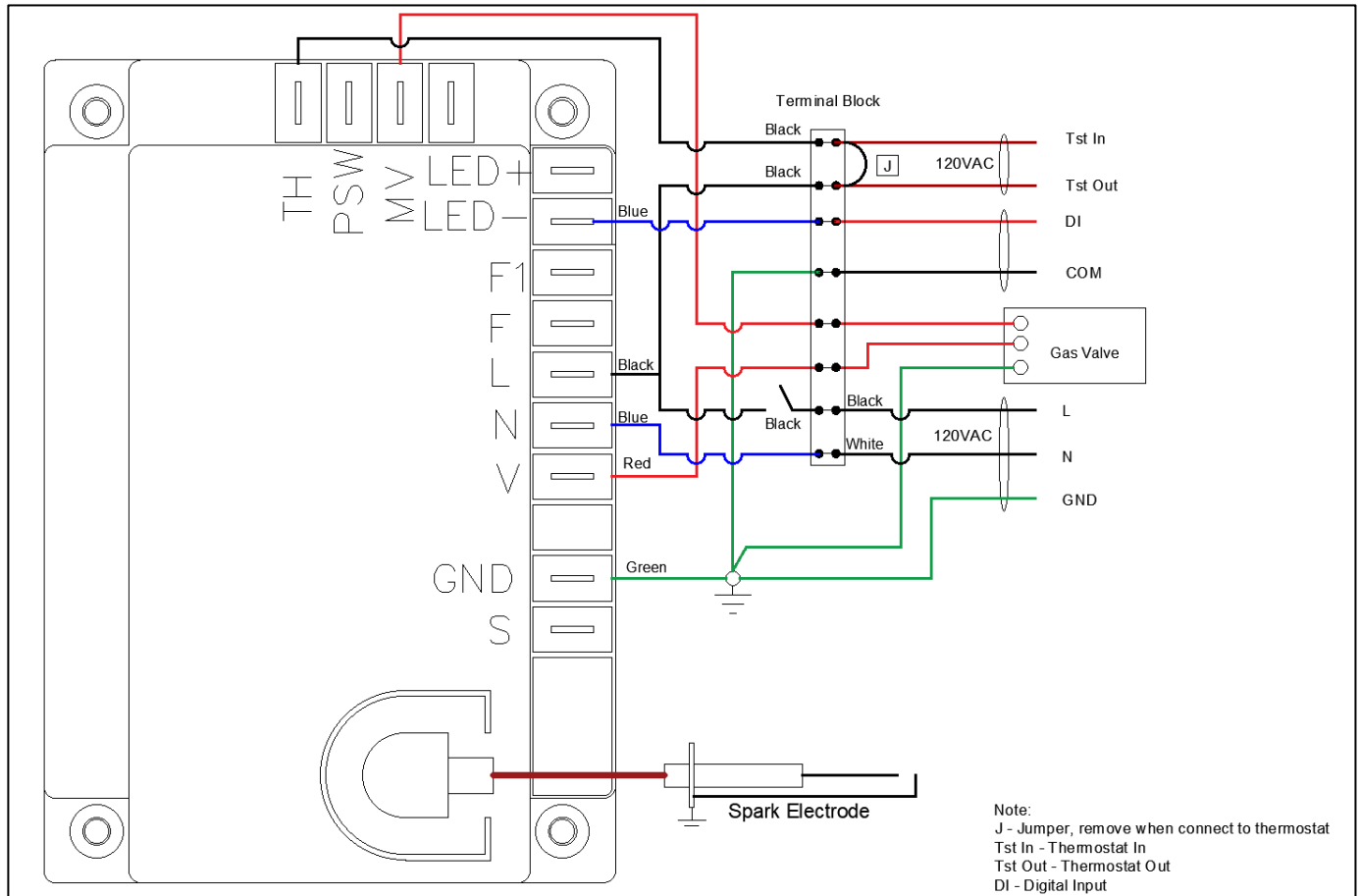


Figure 15: Wiring Diagram Ignition control (CE444) using 120VAC Thermostat

LIGHTING AND SHUTDOWN INSTRUCTIONS

Starting sequence of operation

- Turn on the gas and electrical supply
- Set the thermostat to call for heat.
- Ignition should occur immediately
- If the burner fails to light, or flame is not detected during the first trial for ignition (a period of approximately 10 seconds) the gas valve is de-energized and the control goes through an inter-purge delay of approximately 15 seconds before another ignition attempt. The control will attempt two additional ignition trials before going into lockout.
- If the heater does not light, shut off the gas completely for 5 minutes before attempting to relight.
- If the thermostat is still calling for heat after one hour, the control will automatically reset and attempt to ignite the burner again.

NOTE: The heater must be grounded. Poor grounding will give nuisance lockouts, particularly during momentary power interruptions.

- To shut down the heater, turn off the gas and electrical supply.

FUEL CONVERSION KIT

The brooder from the factory is equipped to run on propane but can be modified to run on natural gas with the conversion kit supplied.

The conversion kit, **P/N BK024**, contains the following:

BL020 - Natural Gas sticker
UG032 - Orifice #32
BL022 - Conversion Label
LT357 - Conversion Instruction Sheet BRHS
BG028 – Adapter, 3/8 FPT x 1/8 MPT with Orifice 1.10mm NG

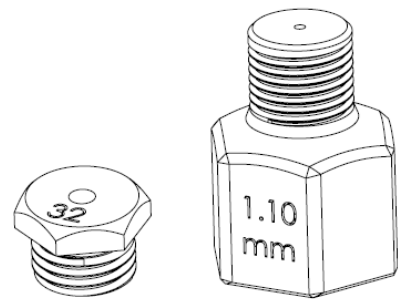


Figure 16

NOTE: If the brooder has been running on propane, first turn off the gas supply at the main shut-off valve and purge the systems of fuel until combustion stops. Disconnect the main power supply or set the thermostat to call for no heat, then disconnect the hose from the gas valve.

1. Use an 11/16" wrench to hold the 3/8" NPT fitting in place, and with a 5/8" wrench loosen the tube fitting. Lift off the gas valve and take care that the ferrule inside the tube fitting does not fall out.

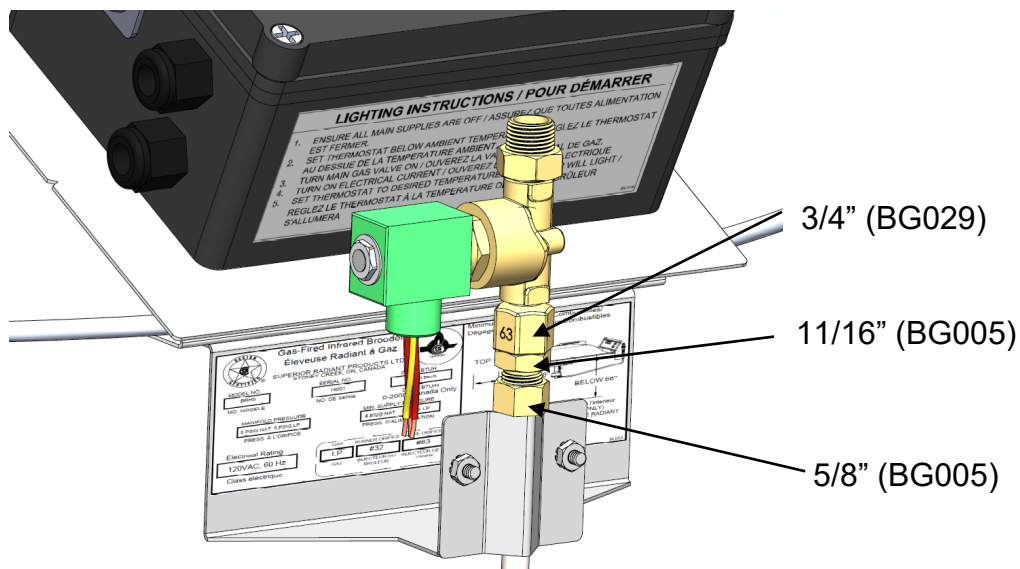


Figure 17

2. Disconnect the orifice adapter **BG029** from the gas valve and remove the 3/8" NPT fitting from the orifice adapter. With a wire brush, clean out the threads of the gas valve and the tube fitting.
3. Apply pipe thread sealant rated for LP gas to the threads of the new orifice adapter **BG028** and the 3/8" NPT fitting.
4. Connect the orifice adapter **BG028** to the gas valve, and then connect the 3/8" NPT fitting to the orifice adapter.
5. Tighten the 3/8" NPT fitting to the tube fitting, holding the 3/8" NPT fitting in place with a 11/16" wrench and turning the tube fitting with a 5/8" wrench. Ensure that the ferrule inside aligns correctly with the fitting.

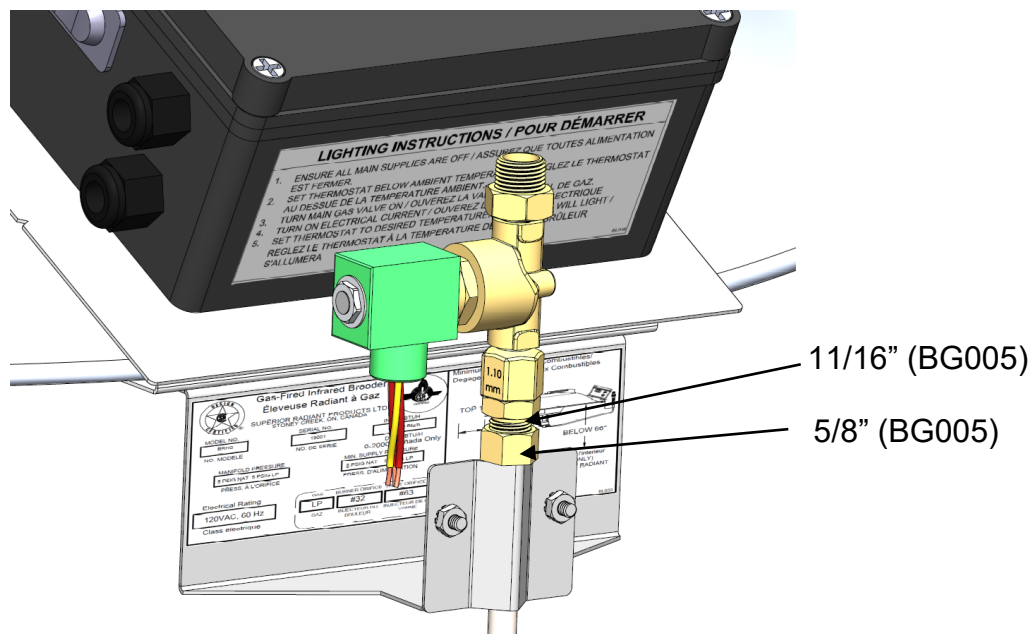


Figure 18

6. Remove the orifice block from the bottom of the burner by turning the locking tab until the orifice block is able to drop down. Be sure to support the weight of the block as it drops down.
7. Remove the orifice with a 1/2" wrench, then clean out the threads of the orifice block with a wire brush

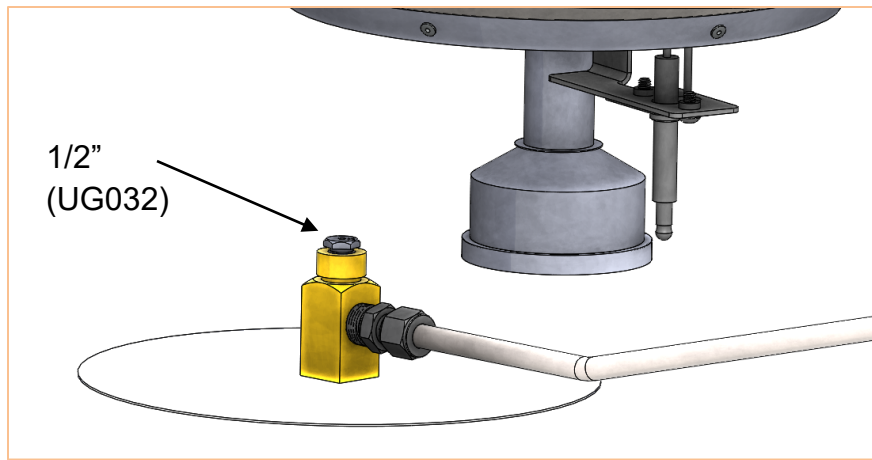


Figure 19

8. Install orifice #32 into the orifice block with a 1/2" wrench.
9. Connect the orifice block to the burner by sliding the orifice into the hole in the bottom of the burner. Turn the locking tab until it slides into the groove between the orifice and the block.
10. Stick the Conversion Label BL033 to the left of the rating plate. Take the Natural Gas stickers and place them over the indicated section of the rating plate.

This appliance was converted on _____ (day-month-year)

to _____ gas with

Kit No. _____

by _____

(name and address of organization making this conversion), which accepts the responsibility that this conversion has been properly made.

BL022

Gas-Fired Infrared Brooder
Éleveuse Radiant à Gaz

SUPERIOR RADIANT PRODUCTS LTD.
STONEY CREEK, ON, CANADA

MODEL NO. BRHS	SERIAL NO. 19001	INPUT BTU/H 36,000 Btu/h						
NO. MODELE	NO. DE SERIE	DEBIT BTU/H 0-2000' Canada Only						
MANIFOLD PRESSURE 5 PSIG NAT 5 PSIG LP PRESS. À L'ORIFICE		MIN. SUPPLY PRESSURE 5 PSIG NAT 5 PSIG LP PRESS. D'ALIMENTATION						
Electrical Rating 120VAC, 60 Hz Class electrique		<table border="1" style="width: 100%; border-collapse: collapse;"> <tr> <td style="width: 33%;">GAS LP</td> <td style="width: 33%;">BURNER ORIFICE #49</td> <td style="width: 33%;">VALVE ORIFICE #63</td> </tr> <tr> <td>GAZ</td> <td>INJECTEUR DU BRULEUR</td> <td>INJECTEUR DE LA VANNE</td> </tr> </table>	GAS LP	BURNER ORIFICE #49	VALVE ORIFICE #63	GAZ	INJECTEUR DU BRULEUR	INJECTEUR DE LA VANNE
GAS LP	BURNER ORIFICE #49	VALVE ORIFICE #63						
GAZ	INJECTEUR DU BRULEUR	INJECTEUR DE LA VANNE						

Minimum Clearances to Combustibles/
Degagement au Matériaux Combustibles

For Indoor Installation Only / Installation à l'intérieur UNVENTED (FOR BROODER USE ONLY)
PAS VENTILÉ (POUR USAGE ÉLEVEUSE RADIANT SEULEMENT)

IAS U.S. No. 8-94
CAN-1-2-20-M85

BL033

Place the conversion label to the left of the rating plate

Place the natural gas sticker here

Figure 21: Conversion label placement and natural gas sticker placement

MAINTENANCE

Annually ask your gas supplier to:

- Check all gas piping annually for leaks or restrictions in gas lines. Clean out the sediment trap.
- Check for gas leaks and proper function of regulators.

Note: Before performing any services or maintenance, shut off gas and electrical supply to heater.

- Check all hose assemblies for cracks, cuts, abrasions or ruptures. Replace any hoses that are suspect.

After each crop/flock inspect the brooder.

- Keep the brooder free of dust, dirt or any combustible material. Use pressurized air.
- Inspect the igniter. Replace igniter if there is excessive wear or erosion.
- Inspect brooder orifice. Remove the orifice block from the bottom of the burner by turning the locking tab until the orifice block is able to drop down. Clean the orifice using air.
- Inspect the burner. Clean the burner parts using a small brush. Use pressurised air.
- Clean both the inside and outside surfaces of the perforated emitter assembly with a brush and pressurised air.
- Blow all dirt and dust off the reflector.

TROUBLESHOOTING

1. IGNITION MODULE DIAGNOSTICS

LED Indication	Fault Mode
Steady On	Internal Control Failure
2 Flashes	Flame without call for heat
3 Flashes	Ignition Lockout

2. FLAME CURRENT MEASUREMENT

The flame current passes through the flame from the sensor and to the ground. The flame current necessary to keep the system from lockout should be 1.0 μ A DC or higher.

3. SPARK ELECTRODE INSPECTION

- Inspect the spark electrode for possible cracks in the ceramic insulator. Replace if necessary.
- Check for proper electrode spark gap. Electrodes should have a gap spacing of 1/8".

4. BROODER DOES NOT LIGHT

- Make sure the switch is ON
- Check the fuel supply valve.
- Check the gas pressure supplied.
- Check the voltage supplied to the brooder.
- Check wiring.

5. BROODER LIGHT BUT DOES NOT STAY LIT

- Check grounding.
- Check the gas pressure supplied.
- Check the flame sensor

6. EMITTER NOT GLOWING RED

- Check the supply gas pressure (too low), refer to the rating plate.
- Check the orifice and burner

7. FLAMES BURNING OUTSIDE OF EMITTER SURFACE

- Check gas pressure (too high), refer to the rating plate.
- Check the orifice size.
- Check type of the gas, refer to the rating plate.
- Clean the burner if necessary.

REPLACEMENT PARTS

ITEM	DESCRIPTION	PART NUMBER
1	Ignition control Fenwal CNE	BE017 CE444
2	On/Off switch	BE007
3	Gas valve	BG014
4	Gas Tubing with fittings	BG021
5	Burner orifice – Propane	UG029
6	Burner orifice – Natural gas	UG032
7	Adapter, 3/8FPT x 1/8MPT with Orifice (Natural Gas)	BG028
8	Adapter, 3/8FPT x 1/8MPT with Orifice (Propane)	BG029
9	Ignition cable	BE004
10	Electrode	BE003
11	Emitter Assembly	BS071
12	Power Cord, 10 ft.	CE385

SERIES BRHS INFRARED HEATERS WARRANTY

The manufacturer warrants to the original owner that the product will be free of defects in material and workmanship as described below.

COMPONENT	WARRANTY PERIOD
Burner & Controls	3 Years
Reflector	7 Years

The Manufacturer's obligation under this warranty is limited to repair or replacement, F.O.B. its facility, of the defective part. In the case of replacement parts, the warranty period shall be the longer of the original warranty or a period of 12 months from the date of purchase. In no event shall the Manufacturer be liable for incidental expense or consequential damages of any kind.

This warranty does not cover any shipping, installation or other costs incurred in the repair or replacement of the product. No materials will be accepted for return without authorization.

This warranty will not apply if in the judgment of the Manufacturer, the heater has been improperly installed, unreasonably used, damaged or modified.

This warranty will not apply to damage to the product when used in corrosive atmospheres and in particular atmospheres containing halogenated hydrocarbons. No person is authorized to assume for the Manufacturer any other warranty, obligation or liability.

THE REMEDIES PROVIDED FOR IN THE ABOVE EXPRESS WARRANTIES ARE THE SOLE AND EXCLUSIVE REMEDIES. NO OTHER EXPRESS OR IMPLIED WARRANTIES ARE MADE INCLUDING, BUT NOT LIMITED TO, ANY IMPLIED WARRANTY OF MERCHANTABILITY OR FITNESS FOR A PARTICULAR USE OR PURPOSE.