



Feeding



Drinking

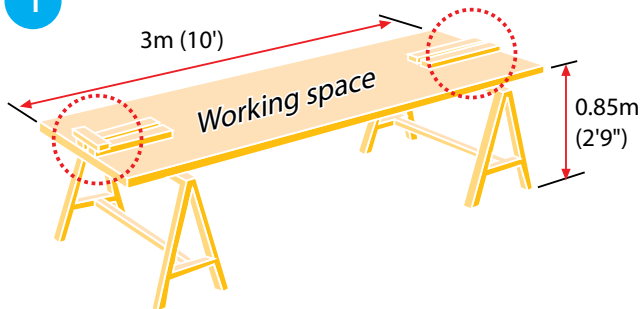


Climate



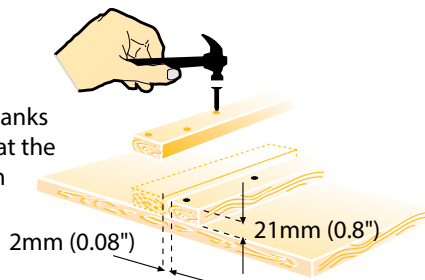
Nipple Drinker System Installation Manual

1

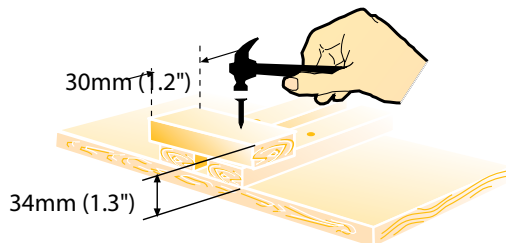


2

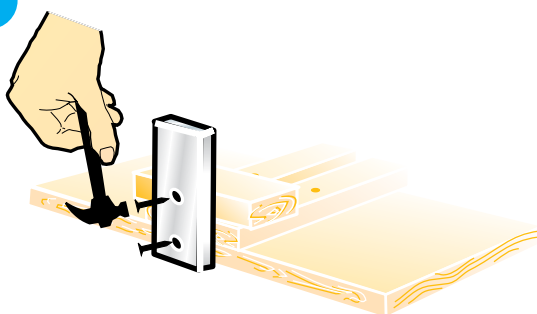
When nailing the planks together, ensure that the gaps between them line up straight.



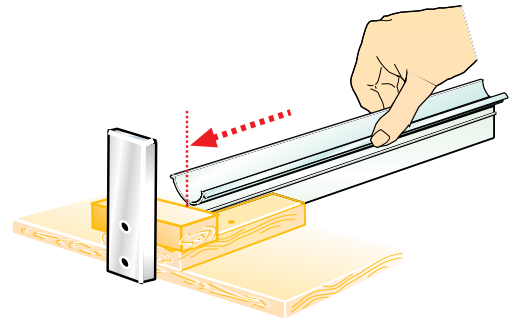
2.1



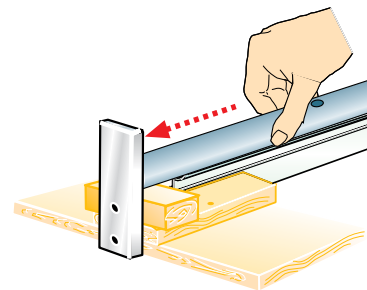
3



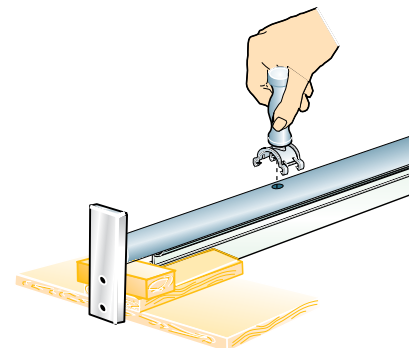
4



5

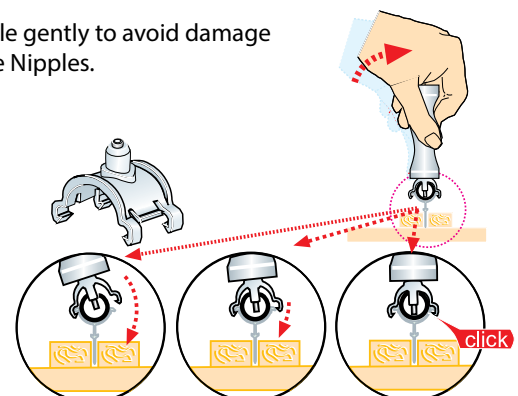


6

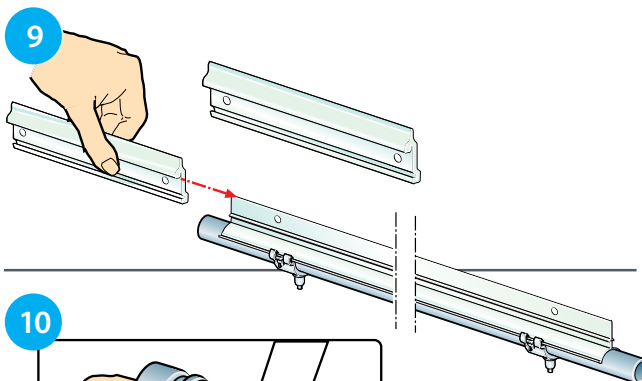
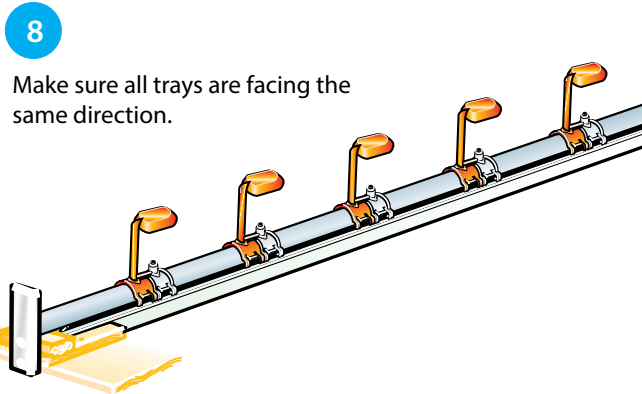
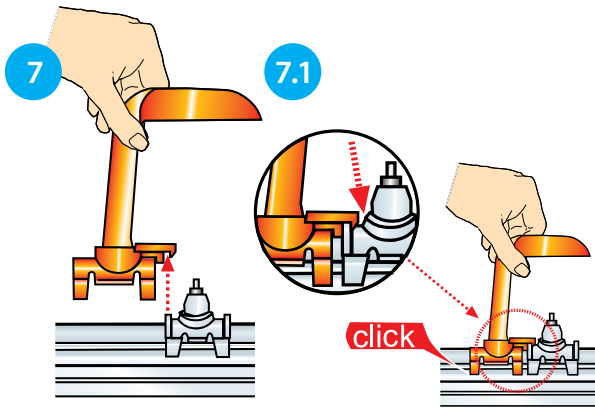


6.1

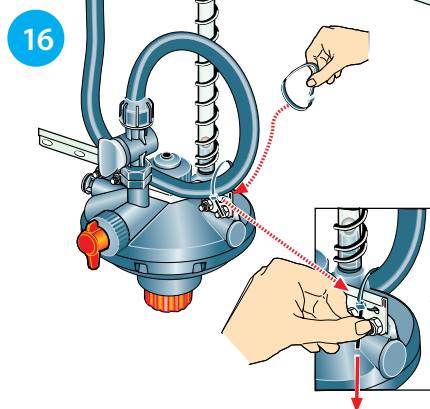
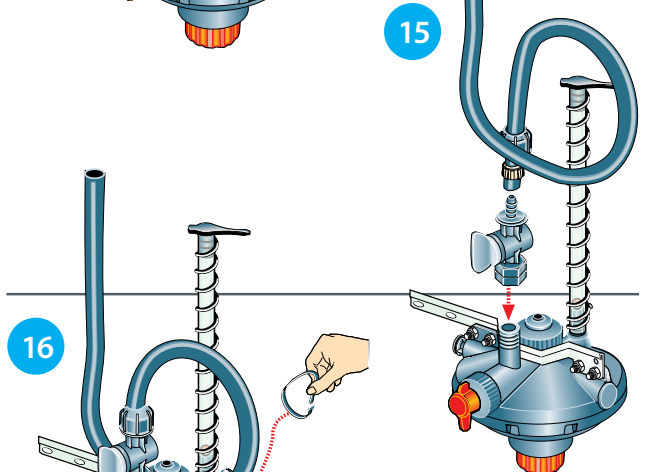
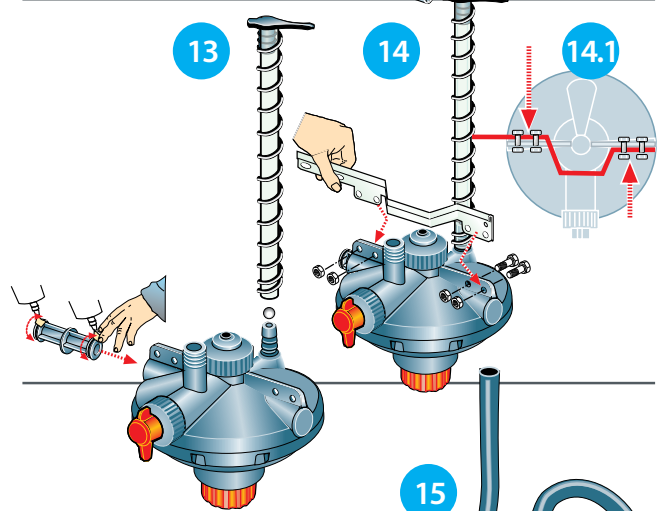
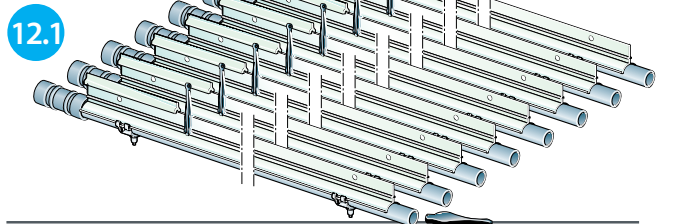
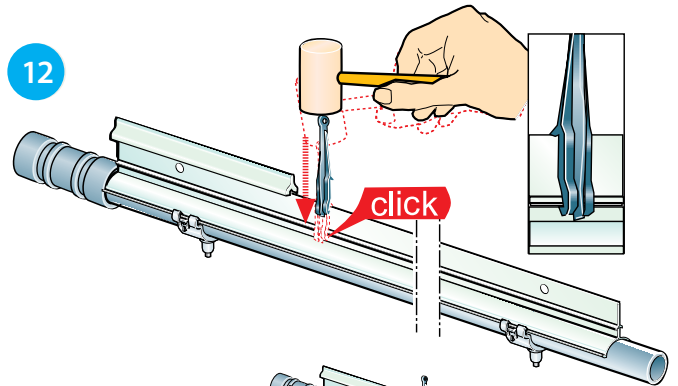
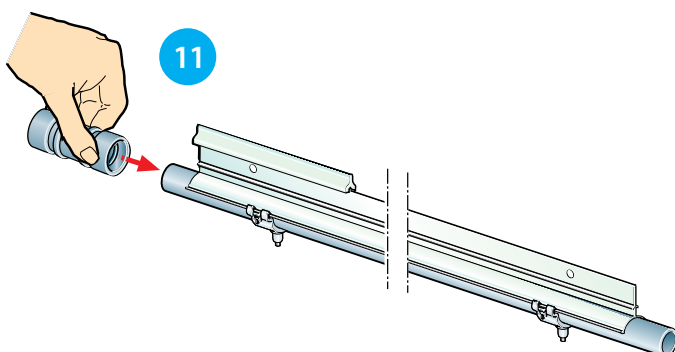
Handle gently to avoid damage to the Nipples.

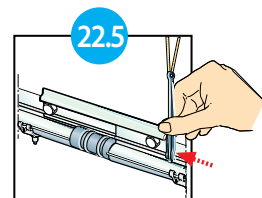
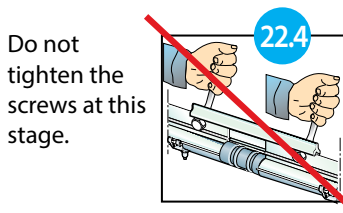
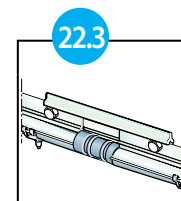
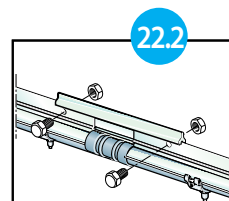
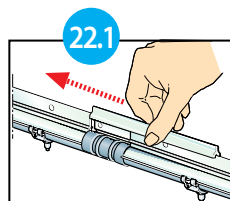
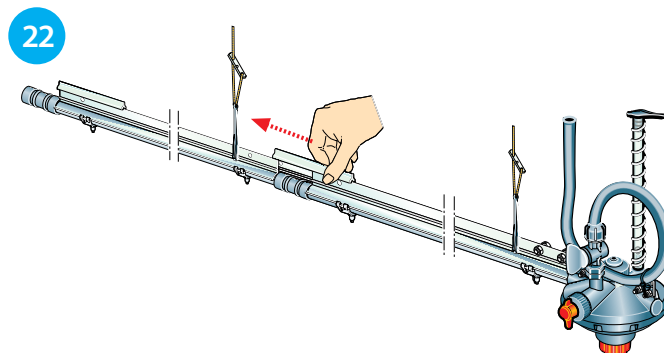
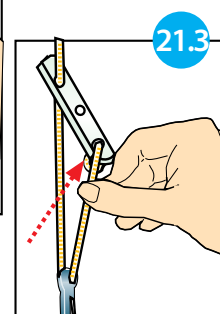
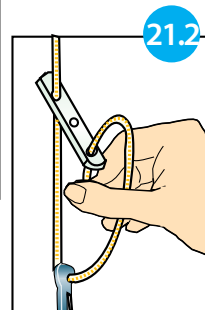
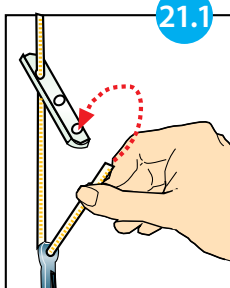
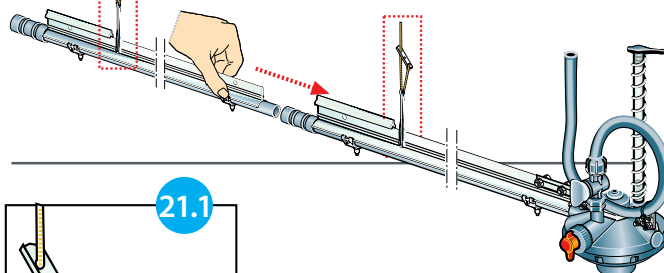
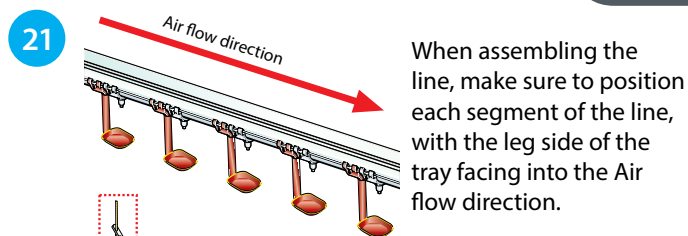
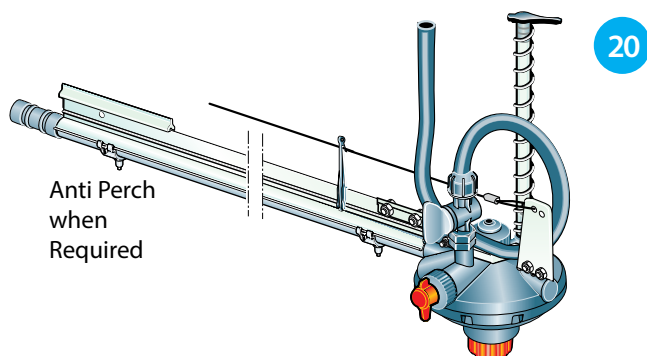
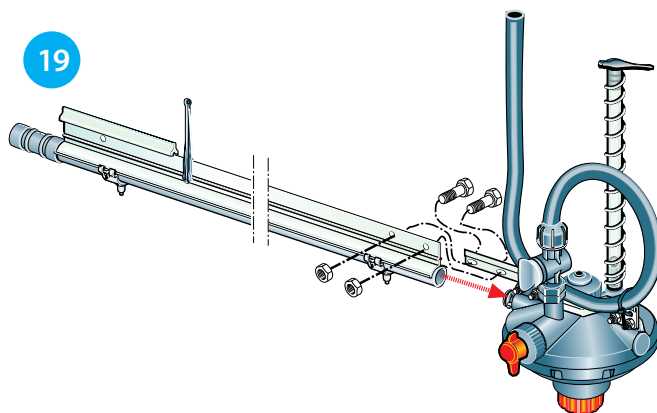
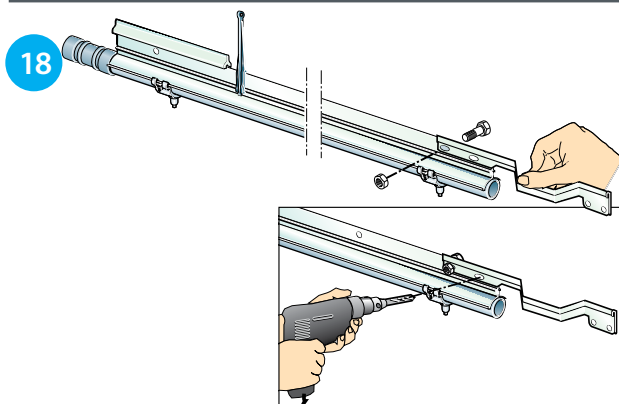
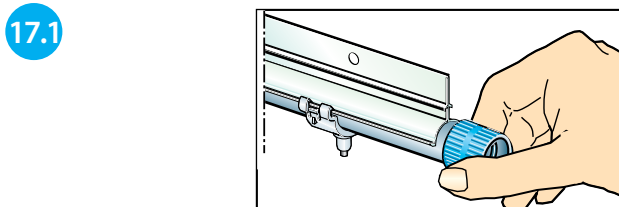
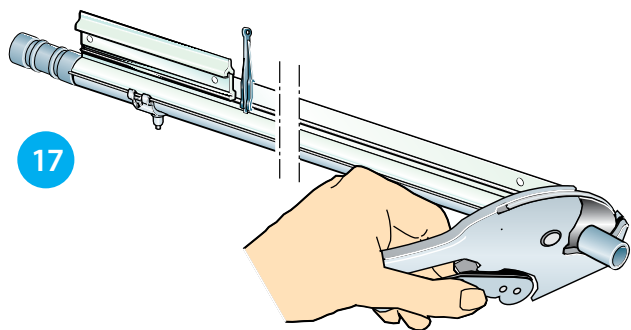


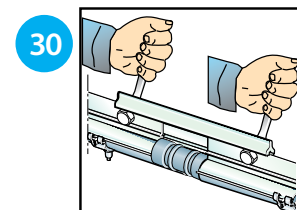
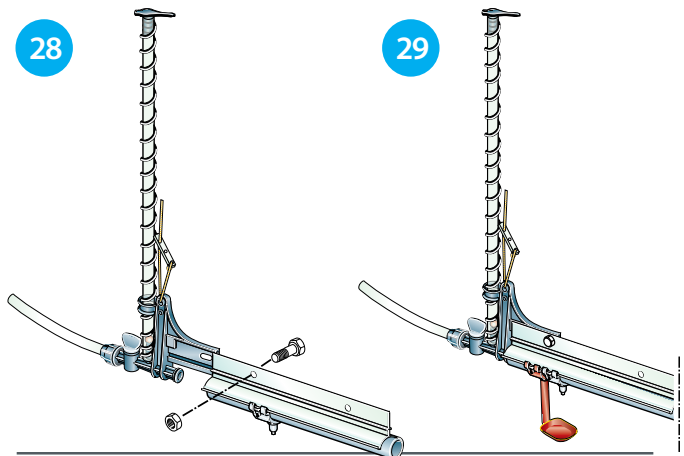
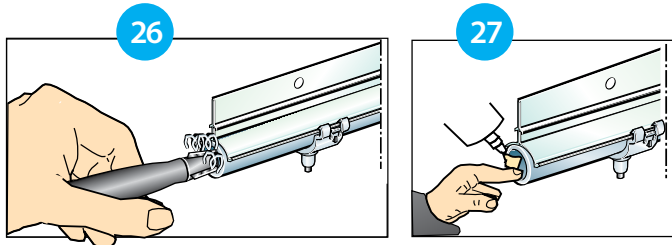
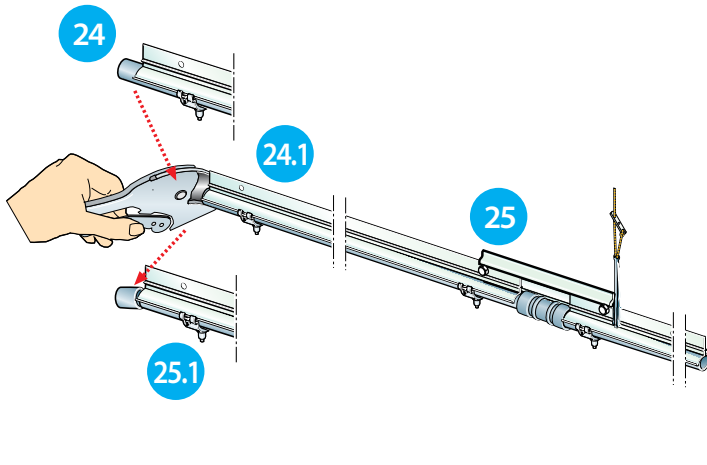
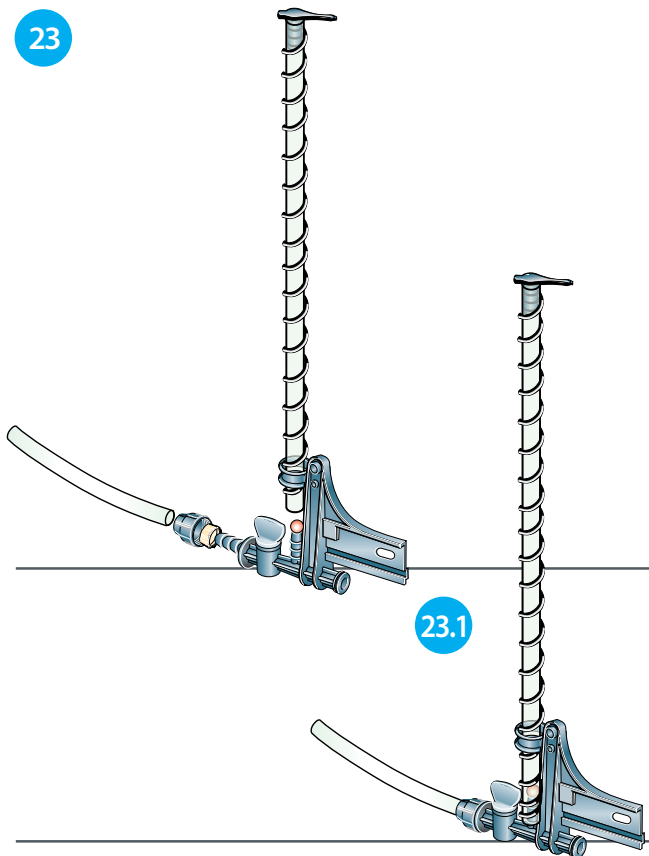
DIVERSIFIED



Lubricate the rubber seal with silicone grease or water. Warning: Silicone lubricants may be used, but do not use oil, grease or soap as a lubricant: they will damage the components.







After the entire line has been assembled, make sure it is properly aligned, without distortions. Then tighten up all the nuts on the connecting pieces.

General instructions

Install a suspension and winching system above the chosen location of the line. Make sure all pulleys are properly aligned at intervals not exceeding 3.0m (10') and that the first pulley is located directly above the beginning of the first section

- A Filter 130 micron or 120 mesh or better must be installed before line header kit.
- If water is supplied from a header tank, the height of the header tank bottom must be at least 3 m (10') above floor level.
- If water is supplied from a main pipe line, In-coming pressure to header kit should be 1.5 bar (22 psi), max. 2.7 bar (40 psi).
- Lines must be level. Maximum permitted drop of line without slope regulator: 15 cm (6").
- If there is a slope, the water inlets (line head kit) must always be on the upper side.
- Maximum length of line: 120 m (400').
- Some restrictions may apply in breeder, pullets and turkey houses. See individual instructions.
- When using a shocker wire, install 4 suspension clips per section.
- Lines should be parallel to the floor.
- Cord adjuster should be positioned near the aluminium profile so that between flocks, the system can be raised as close as possible to the ceiling.
- Before operating the system, the system must be flushed thoroughly with high pressure, one line at a time (for details see PLASSON guide to cleaning water lines).

556 Industrial Way West
Eatontown, NJ 07724 732-363-2333

Info@DiversifiedAg.com
DiversifiedAg.com



DIVERSIFIED