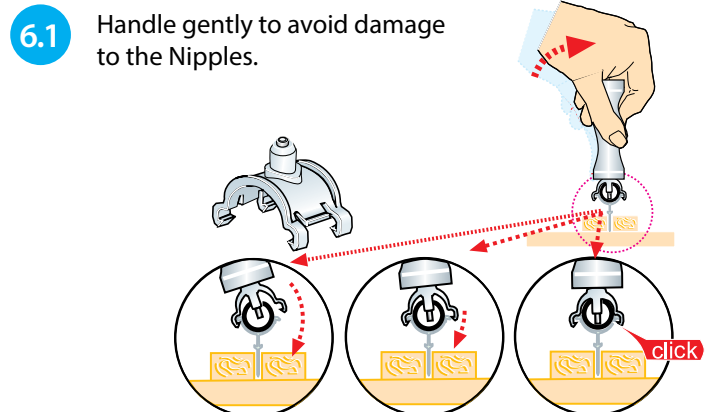
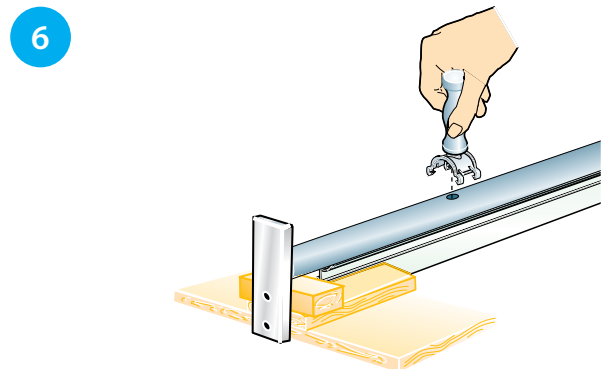
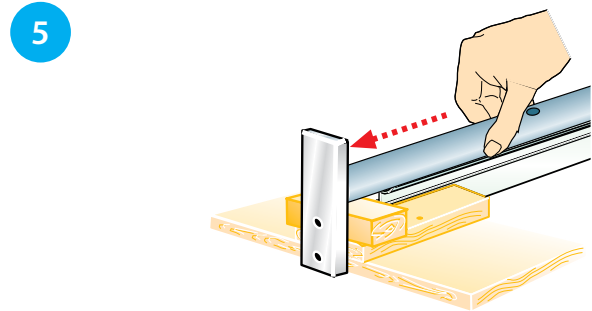
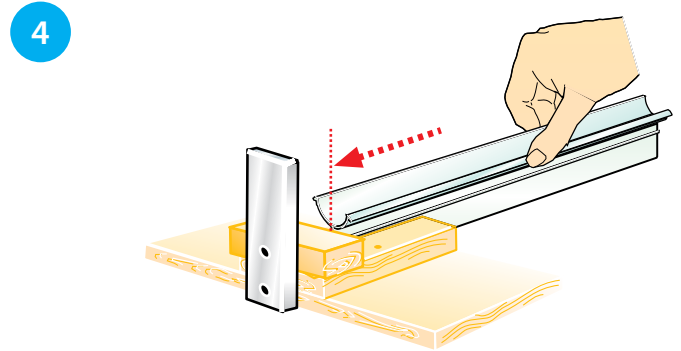
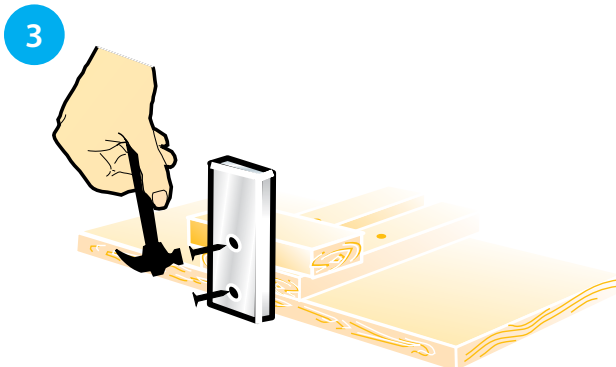
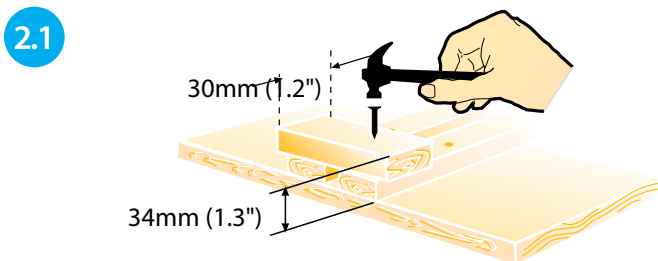
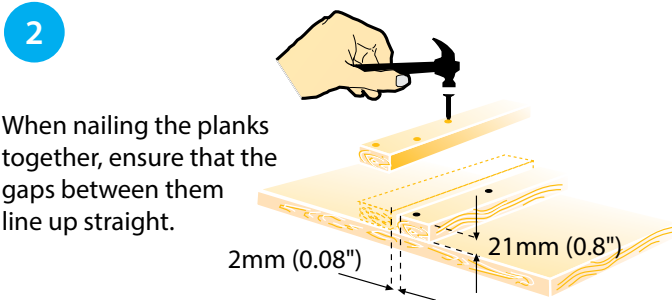
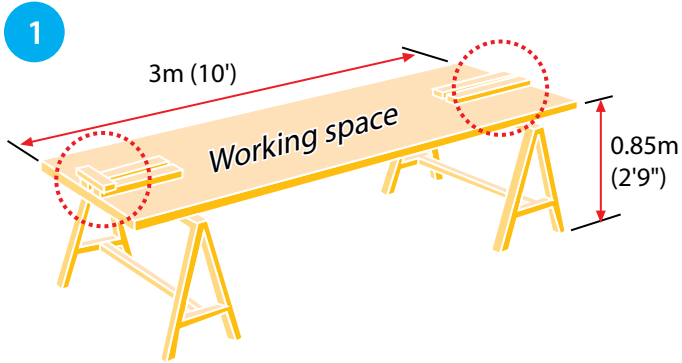




Nipple Drinker System Installation Manual



DIVERSIFIED



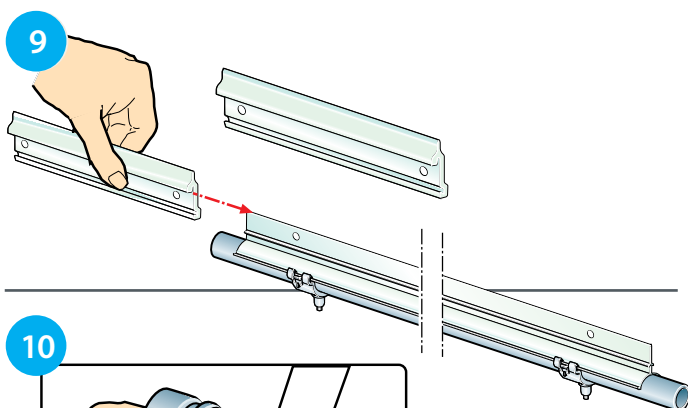
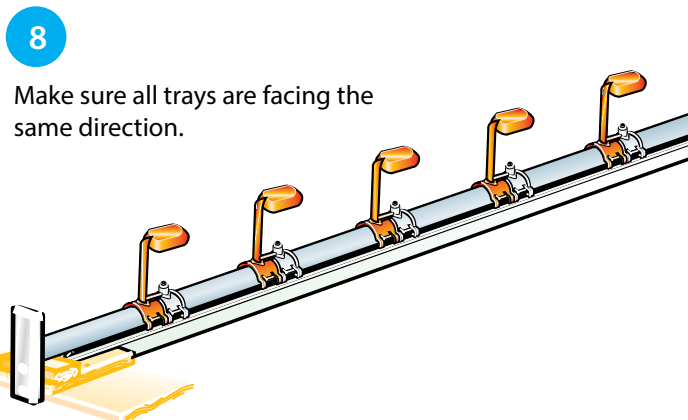
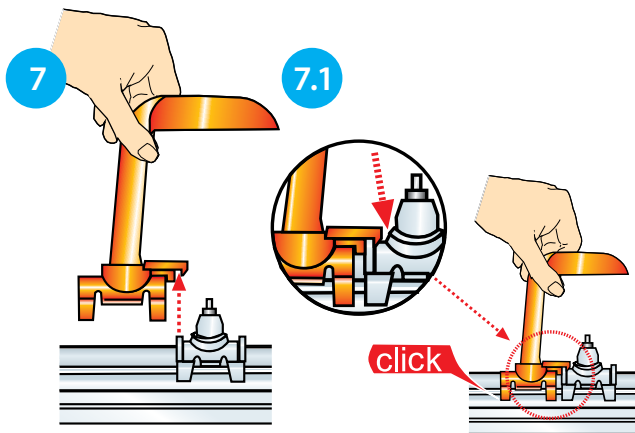
Feeding



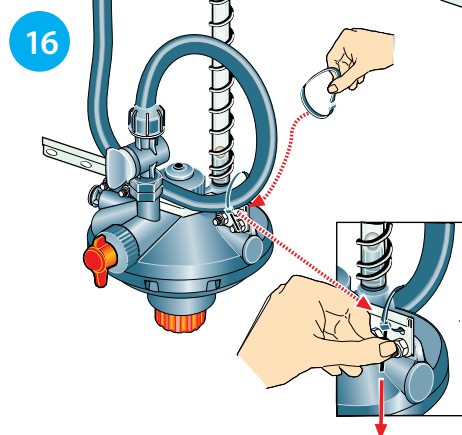
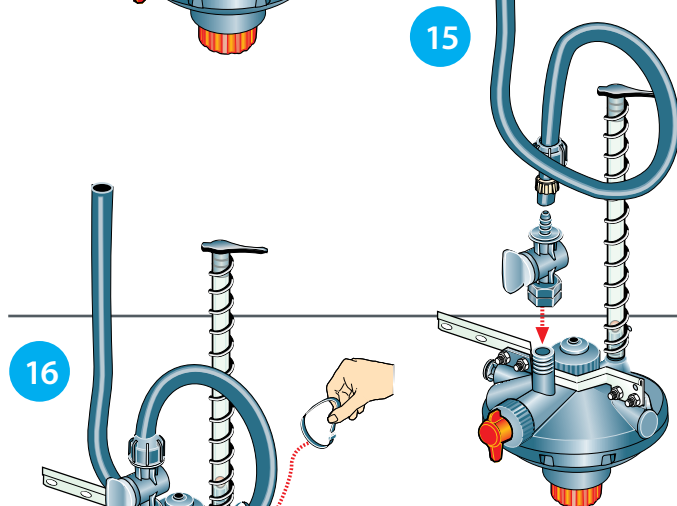
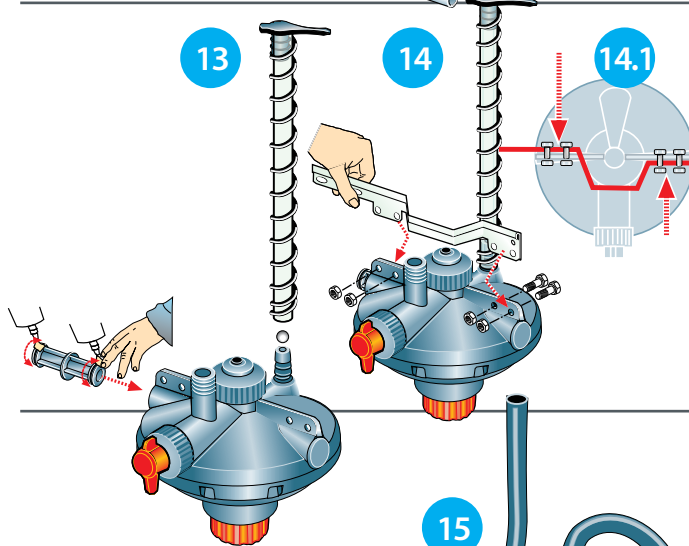
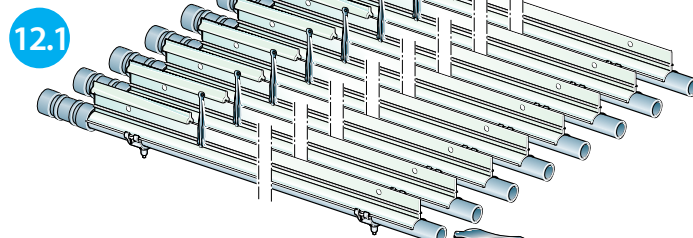
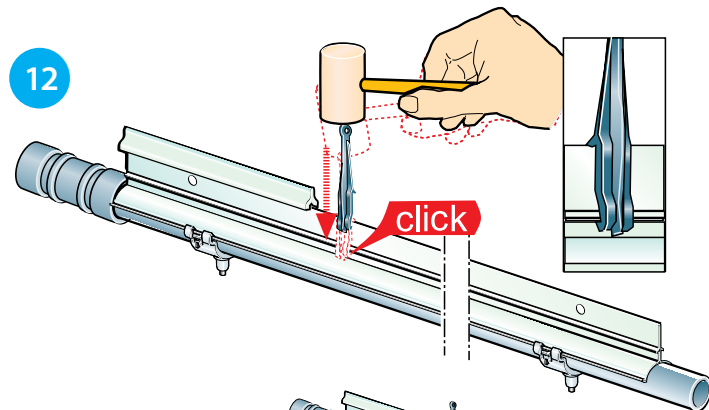
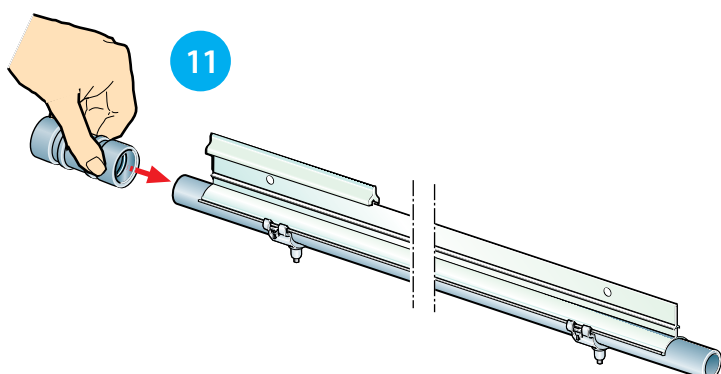
Drinking

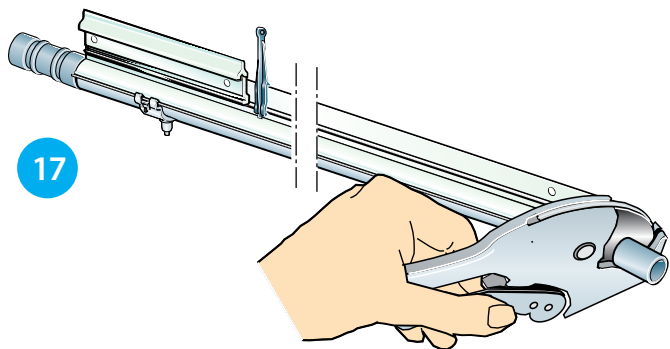


Climate



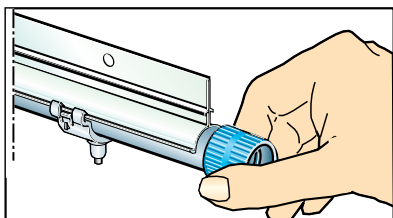
Lubricate the rubber seal with silicone grease or water. Warning: Silicone lubricants may be used, but do not use oil, grease or soap as a lubricant: they will damage the components.



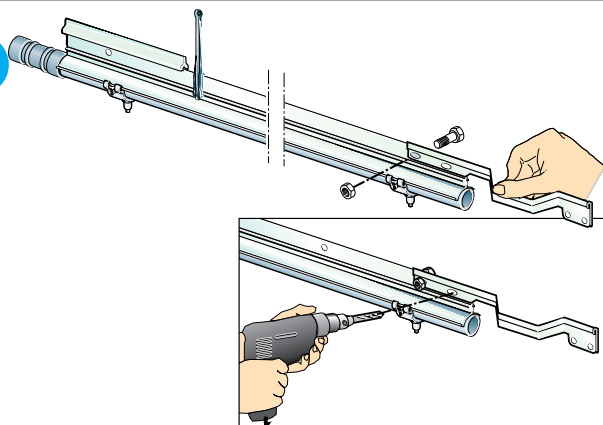


17

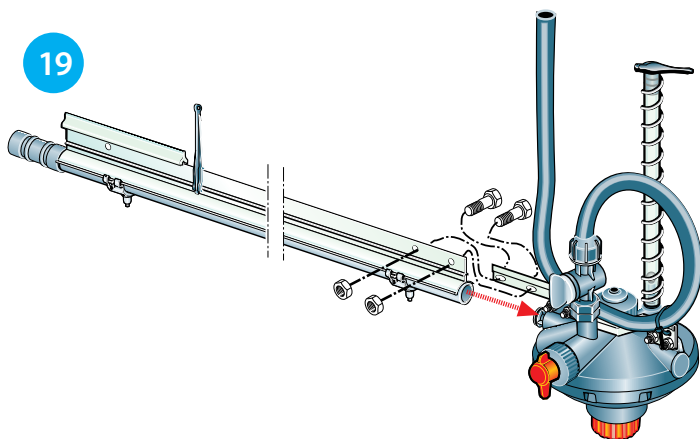
17.1



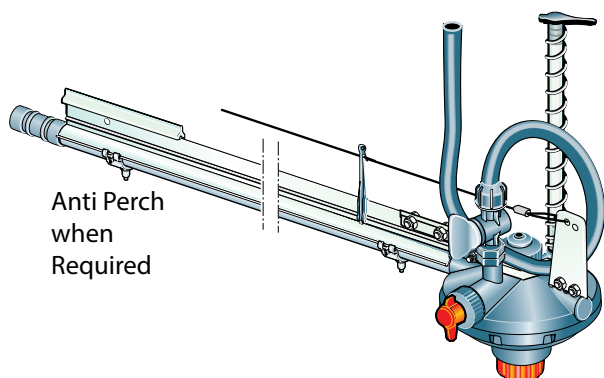
18



19

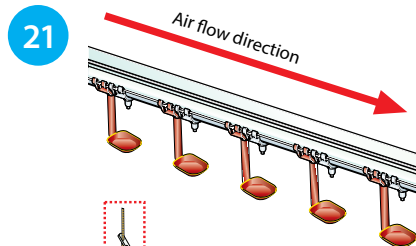


20

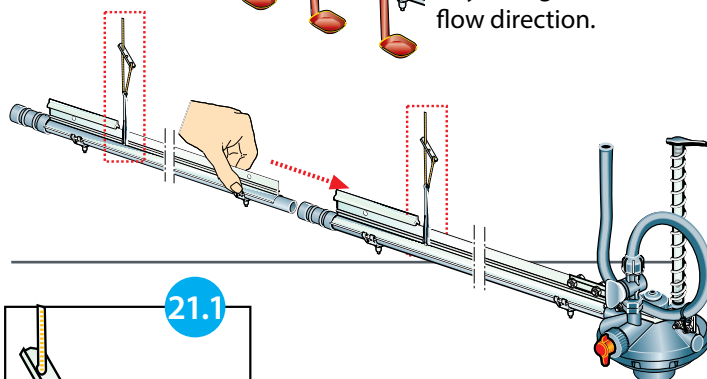


Anti Perch
when
Required

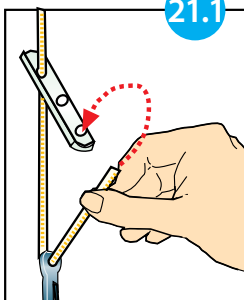
21



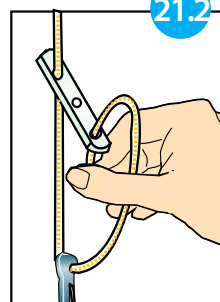
When assembling the line, make sure to position each segment of the line, with the leg side of the tray facing into the Air flow direction.



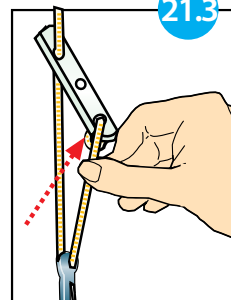
21.1



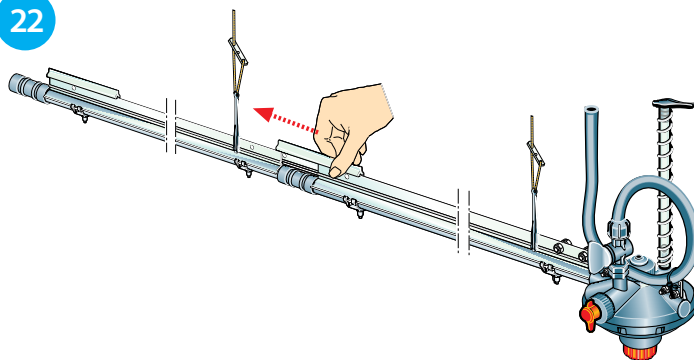
21.2



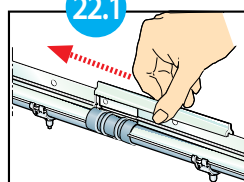
21.3



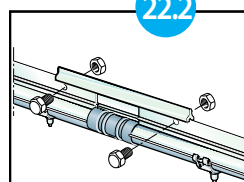
22



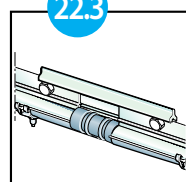
22.1



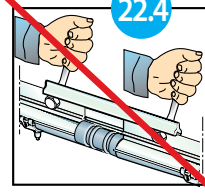
22.2



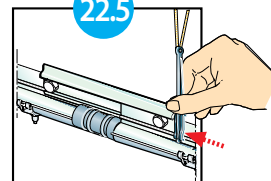
22.3



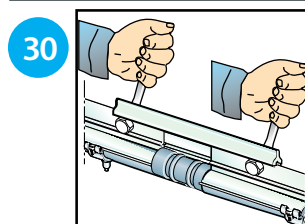
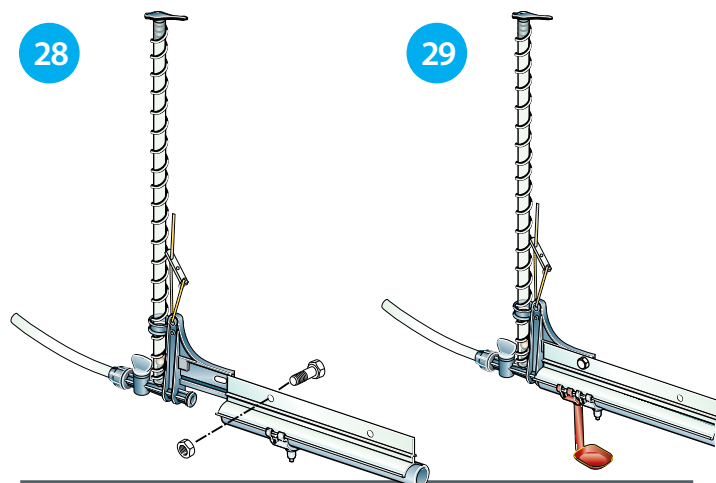
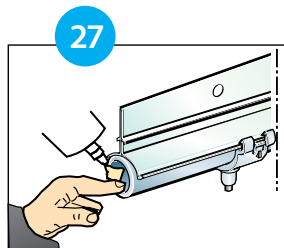
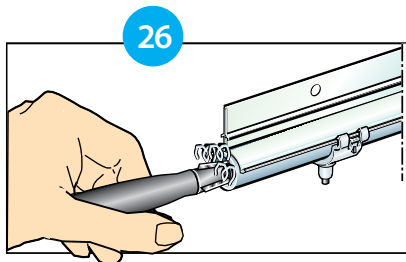
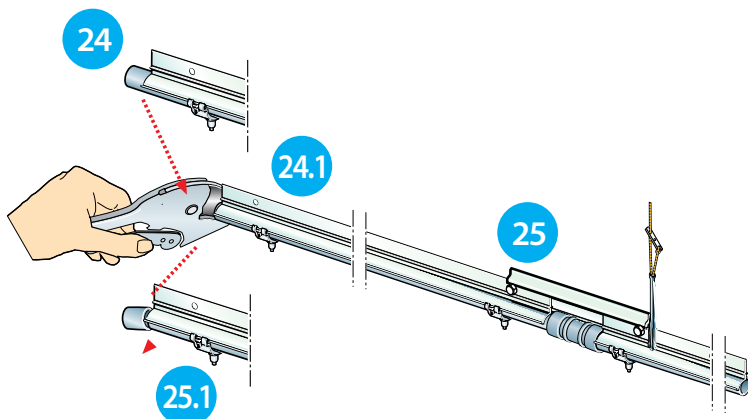
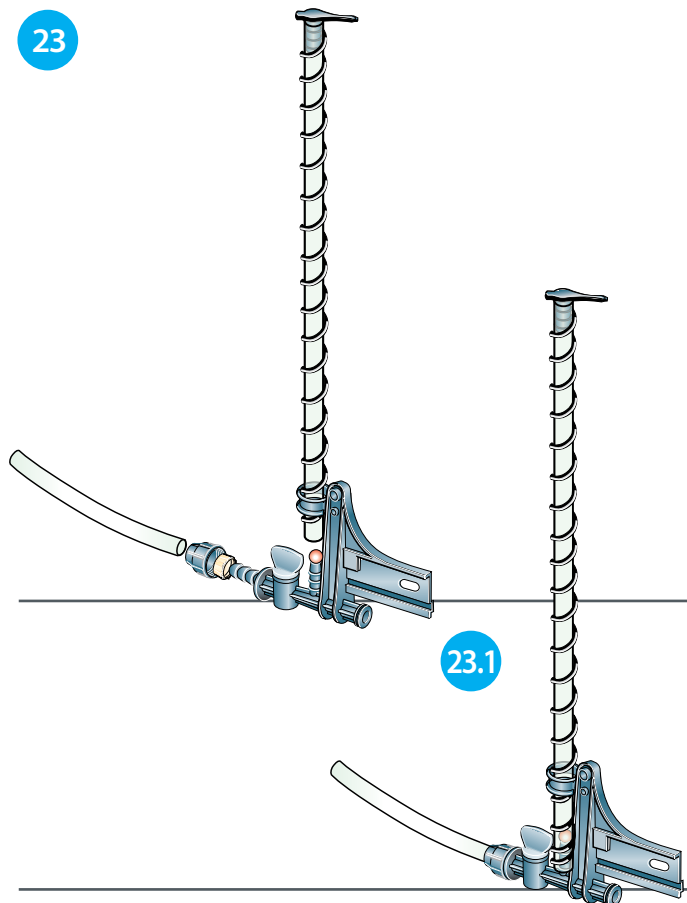
22.4



22.5



Do not
tighten the
screws at this
stage.



After the entire line has been assembled, make sure it is properly aligned, without distortions. Then tighten up all the nuts on the connecting pieces.

General instructions

Install a suspension and winching system above the chosen location of the line. Make sure all pulleys are properly aligned at intervals not exceeding 3.0m (10') and that the first pulley is located directly above the beginning of the first section

- A Filter 130 micron or 120 mesh or better must be installed before line header kit.
- If water is supplied from a header tank, the height of the header tank bottom must be at least 3 m (10') above floor level.
- If water is supplied from a main pipe line, In-coming pressure to header kit should be 1.5 bar (22 psi), max. 2.7 bar (40 psi).
- Lines must be level. Maximum permitted drop of line without slope regulator: 15 cm (6").
- If there is a slope, the water inlets (line head kit) must always be on the upper side.
- Maximum length of line: 120 m (400').
- Some restrictions may apply in breeder, pullets and turkey houses. See individual instructions.
- When using a shocker wire, install 4 suspension clips per section.
- Lines should be parallel to the floor.
- Cord adjuster should be positioned near the aluminium profile so that between flocks, the system can be raised as close as possible to the ceiling.
- Before operating the system, the system must be flushed thoroughly with high pressure, one line at a time (for details see PLASSON guide to cleaning water lines).

Diversified Agriculture LLC

556 Industrial Way W Eatontown, NJ 07724

DiversifiedAg.com



Phone: 732.363.2333

Fax: 732.905.7696

Toll Free: 1.800.348.6663

info@diversifiedAg.com