

# sonata™

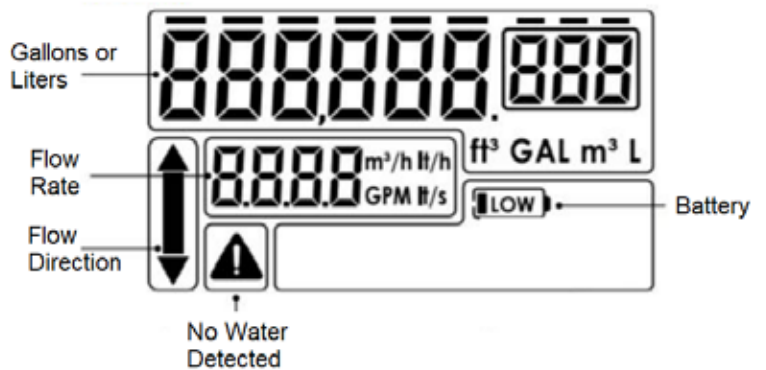
## Quick Installation & Reference Guide

### Pulse Interface

The Sonata pulse output has one cable with 4 wires, color coded as follows:

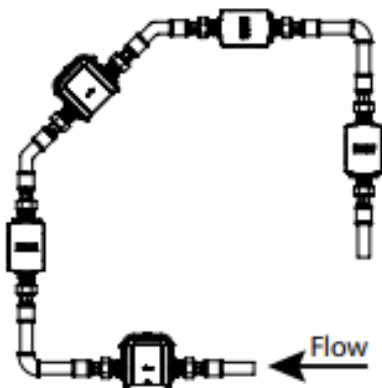
| Wire          | Function  | Set Pulse        |
|---------------|-----------|------------------|
| Red + Orange  | Output #1 | 10 pulse per gal |
| Black + Brown | Output #2 | 1 pulse per gal* |

\*We recommend using Output #2 (1 pulse per gal) for the most accurate readings with older controllers.



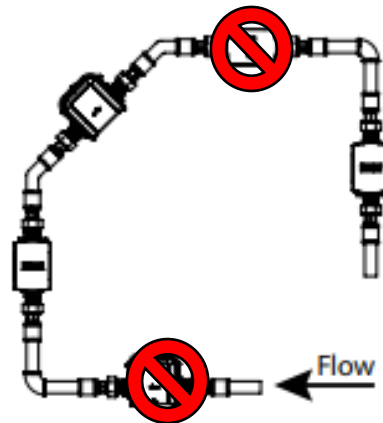
### Sonata Meter Installations (Water pressure 30 PSI or higher)

Installation position - At any orientation



### Sonata Meter Installations if using WOD System (Water pressure 30 PSI or lower)

**NOTE:** For low pressure installations, ensure the Sonata is **NOT** installed horizontally.



For optimal viewing of the real-time GPM flow display, install the Sonata Water Meter vertically at eye level.

**The Sonata Water Meter is available in either US gallons or metric liters.**

| Diversified Part # | Product Description               |
|--------------------|-----------------------------------|
| 73WMS59P           | Sonata Pair Coupling ¾" (Plastic) |
| 73WMS60            | Sonata Pair Coupling 1" (Brass)   |
| 73WMS60P           | Sonata Pair Coupling 1" (Plastic) |

## Technical Specifications

|                           |   |
|---------------------------|---|
| Maximum Working Pressure  | 200 PSI                                   |
| Maximum Water Temperature | 120°F                                     |
| Body                      | PPS, highly reinforced composite material |

## Sonata Operating Range

|                        |               |               |
|------------------------|---------------|---------------|
| Model (Gallons)        | 73WMS01 (¾")  | 73WMS02 (1")  |
| Model (Liters)         | 73WMS01M (¾") | 73WMS02M (1") |
| Extended Low Flow      | 0.05 GPM      | 0.11 GPM      |
| Maximum Operating Flow | 35 GPM        | 55 GPM        |

## Sonata Pulse Generation Specifications

Please note that the Bi-Directional Solid State Relay (SSI) cannot accept electrical signals from a controller or medicator with higher ratings than the below specifications

|                              |                                  |
|------------------------------|----------------------------------|
| Outputs Type                 | Bi-Directional Solid State Relay |
| On-Resistance Max.           | 35 (Ω)                           |
| Minimum Pulse Width          | 10 (msec)                        |
| Load Current (AC/DC)         | 120 (mA)                         |
| Total Power Dissipation Max. | 800 (mW)                         |
| Max Voltage (AC/DC)          | 36 (V)                           |