



Installation Overview Water on Demand Pro



DIVERSIFIED

 **PLASSON**
Livestock



Keys to Installation

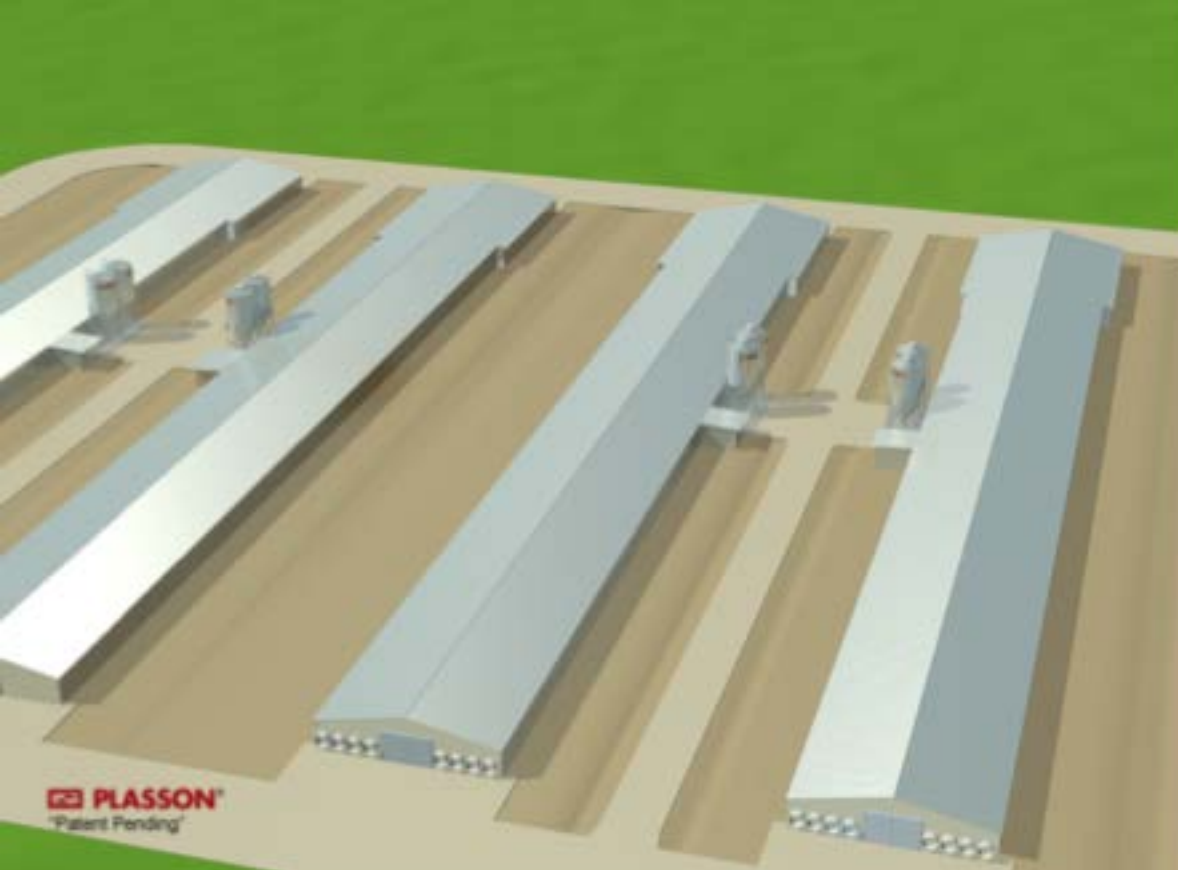
Water on Demand Pro



Installation

Follow installation procedures
included with each unit or found at
www.diversifiedag.com

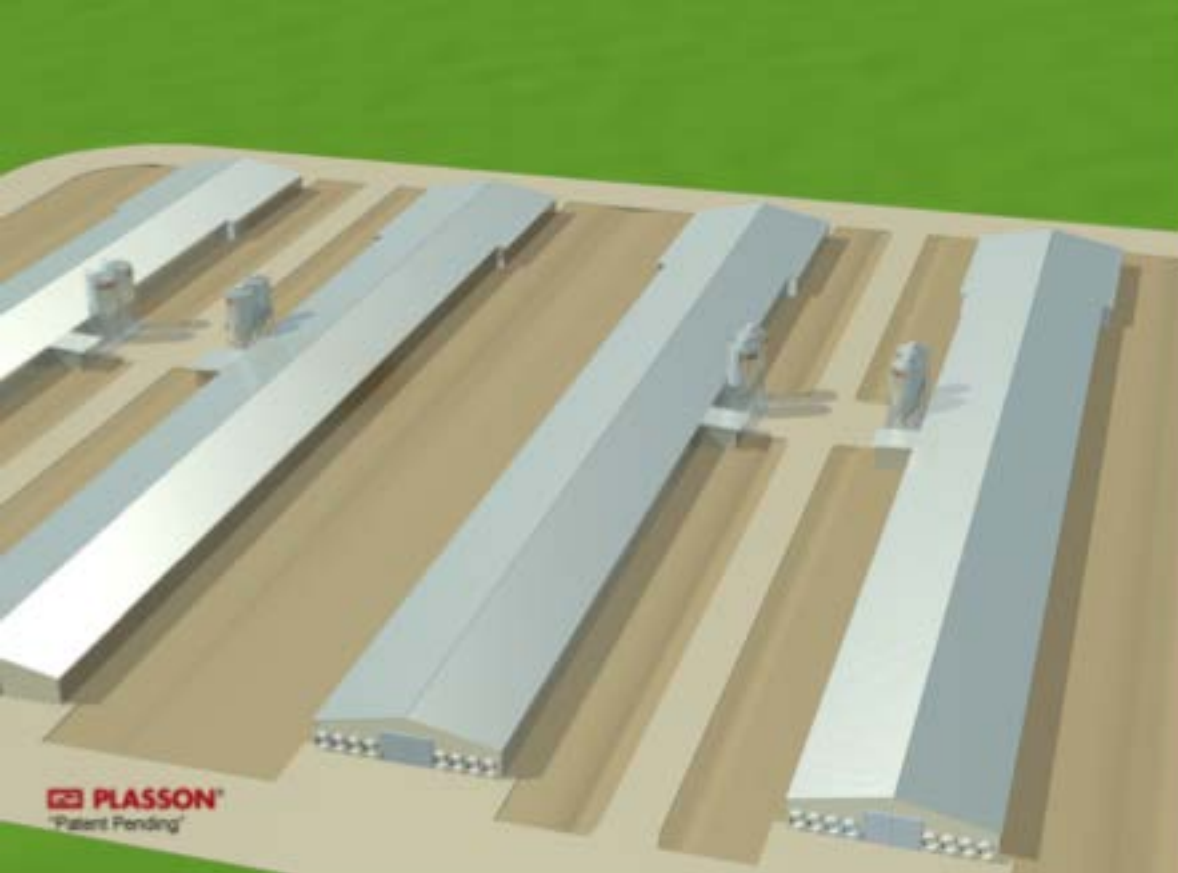




Installation

Water on Demand Pro





Installation

Water on Demand Pro Stand-Alone





Follow all Instructions

Shipped with unit...

Key to success...

Water on Demand Pro



Properly size the WOD units

WOD Pro System = up to 40,000 7 lb. birds

Key to success...

Water on Demand Pro



Properly Size the WOD units

Dual WOD Pro Systems = up to 80,000 7 lb. birds

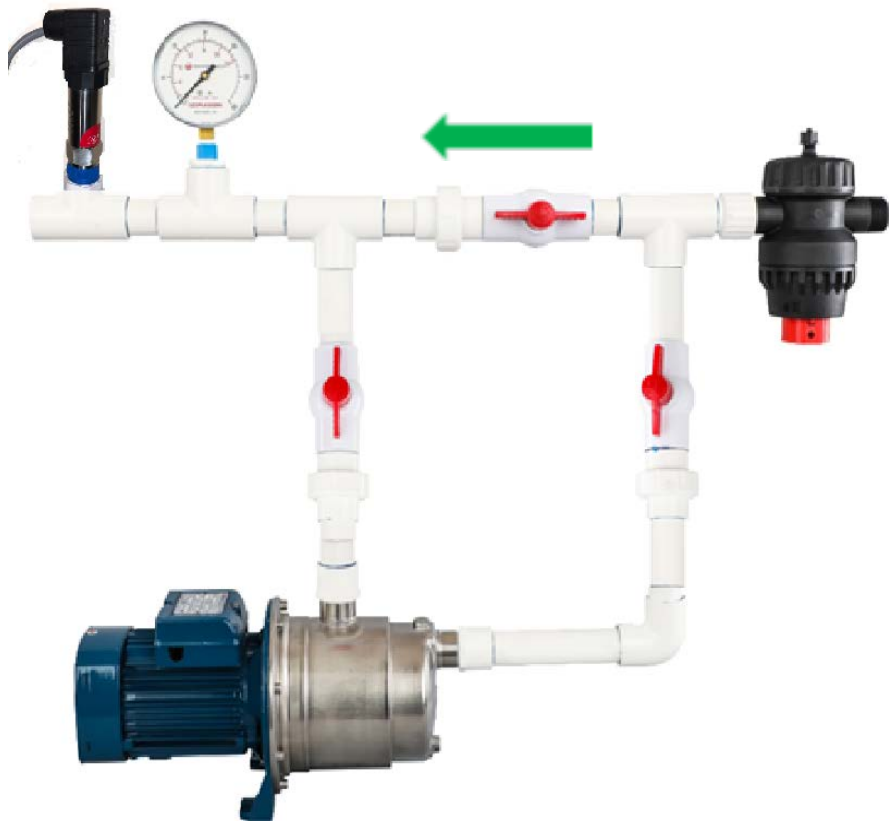




Plumb & install Continuous Pump as shown

Key to success...

Water on Demand Pro



**Install Pressure Gauge and
Pressure Sensor on outlet side of motor**

*Locate Pressure Sensor
minimum 2' or more from the motor*

Key to success...

Water on Demand Pro



2 + feet





Motor must be installed Horizontally



Not in vertical position

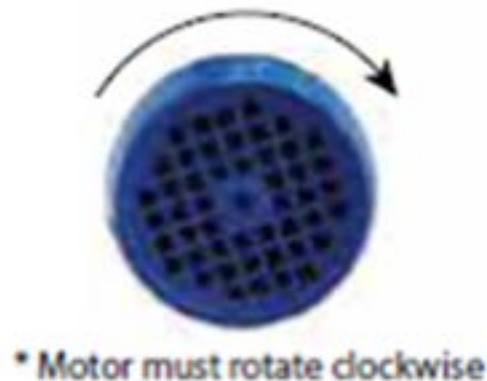
Key to success...

Water on Demand Pro

Key to success...

WOD Pro

- Power supply 220v
- Install kill switch to power off between flocks
- Inspect pump to confirm clockwise pump rotation
- Proper water flow direction



Install Bypass line.

**with drain valve on outlet side*

Key to success...

Water on Demand Pro

= Water flow direction

= Drain valves

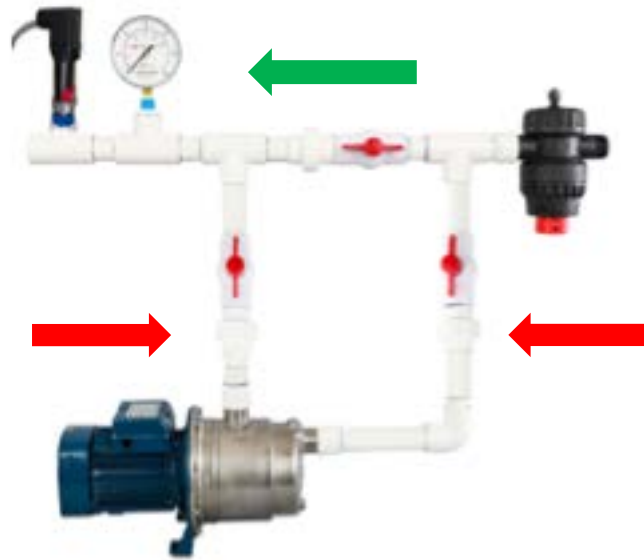


DIVERSIFIED



Install Bypass line.

**With PVC Unions*

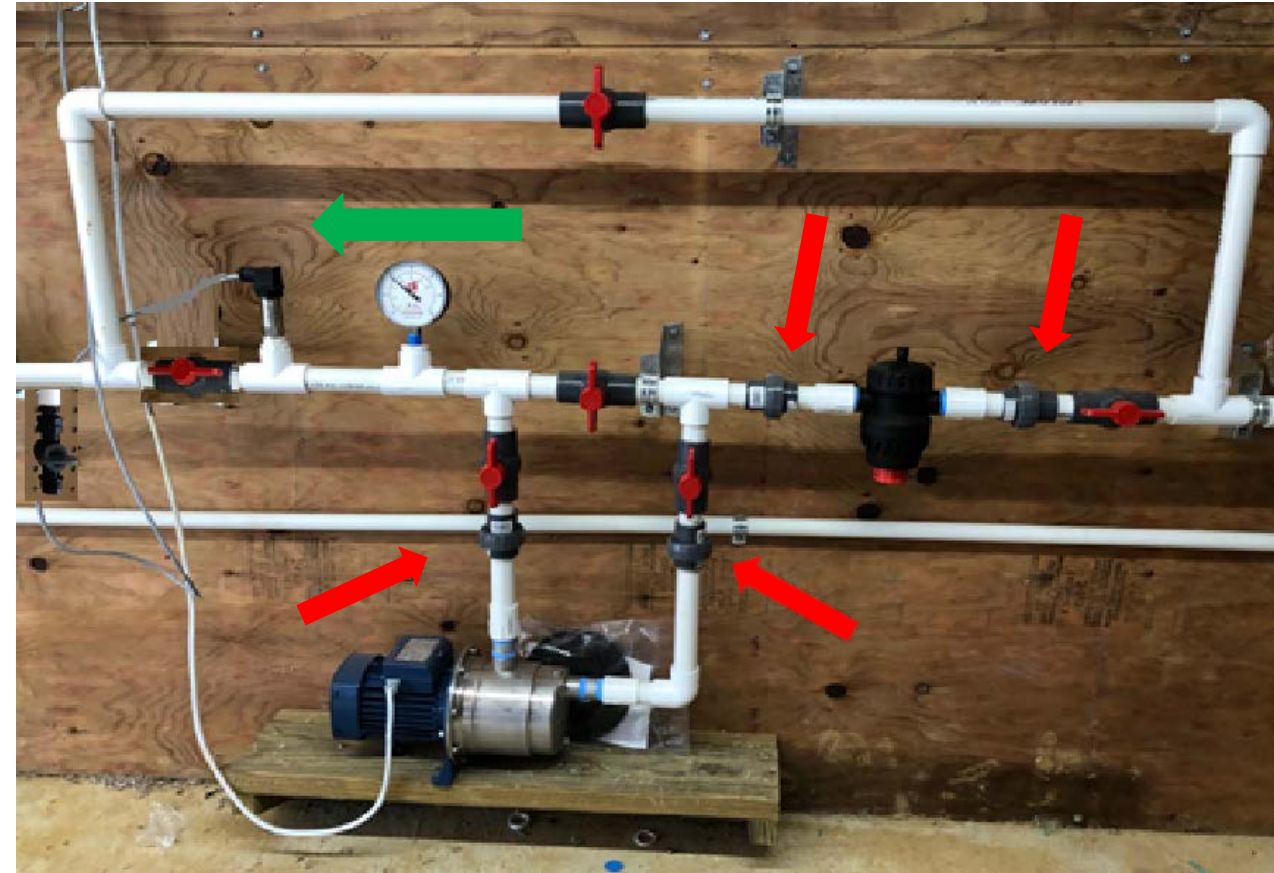


Key to success...

Water On Demand Pro

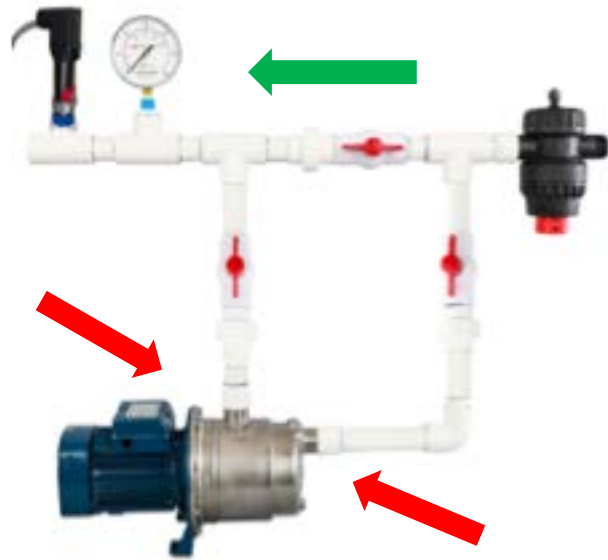
= Water flow direction

= PVC Unions



Install Bypass line.

**note special BPT x NPT fittings supplied must be used on continuous pump*

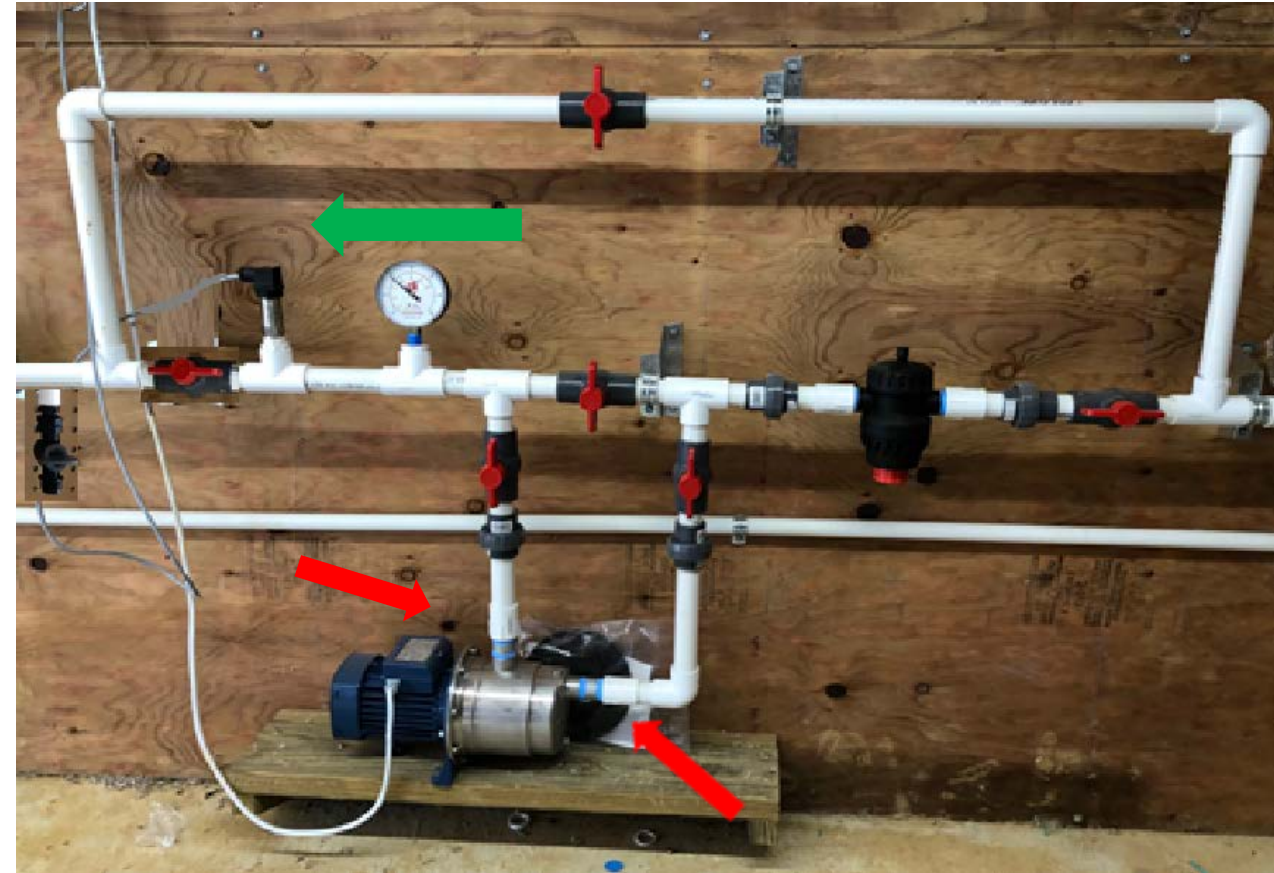


Key to success...

Water On Demand Pro

= Water flow direction

= Sch 80 BPT x NPT fittings





*Install high capacity filter w/gauges
Prior to every WOD system*

Key to success...

Preferably 30 micron or better

Water on Demand Pro



In certain locations having poor water quality it is strongly recommended to install a pre-filter for sediment.

Suggest using 1" Spin-down flushable unit.

Key to success...

Water On Demand Pro

120-400 mesh preferable

**shown Arkal #72DF101 mesh 140 w/flush valve*



Install high capacity Medicator

Suggest prior to Water on Demand system

**high pressure side*

Key to success...

Water on Demand Pro



Prior to Water on Demand system

Higher water pressure will allow more uniform injection from medicator

Key to success...

Part #71252802020P001 0.2-2%

Water on Demand Pro



Key to success...

Water on Demand Pro

If using injector type system

Install After WOD System

**low pressure side*

*Tefen InjectRite #712536000000230
Arad Sonata low flow meter #73WMS01*



Install low water pressure alarm switch:

Must function properly at 5 psi.



Key to success...

Water on Demand Pro

*Install after WOD System



Set Incoming water line pressure at or above 40 psi to maintain volume

Prior to WOD Pro

Key to success...

Water on Demand Pro





If incoming pressure reduction is needed in each house use a second UPR to maintain constant high water pressure

prior to the WOD-UPR being set at 8 psi

Key to success...

**High Volume-Universal
Pressure Regulator
UPR**



**Due to Increased use of
Copper Sulphate*

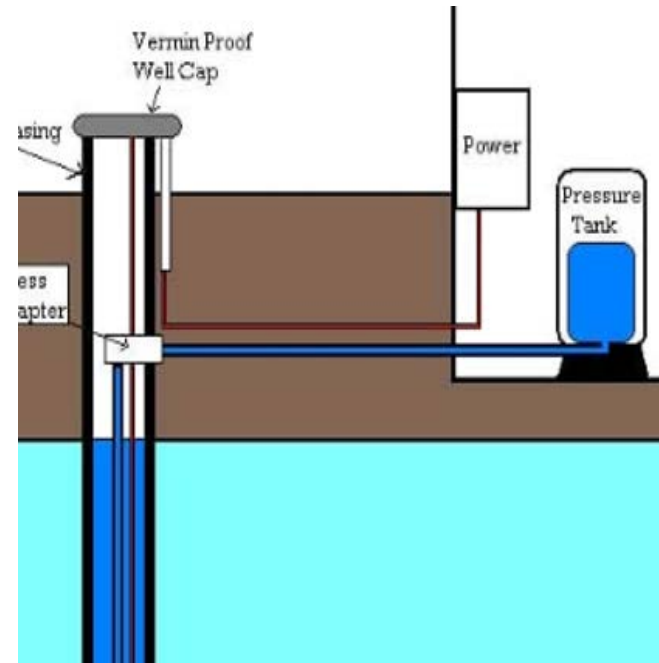


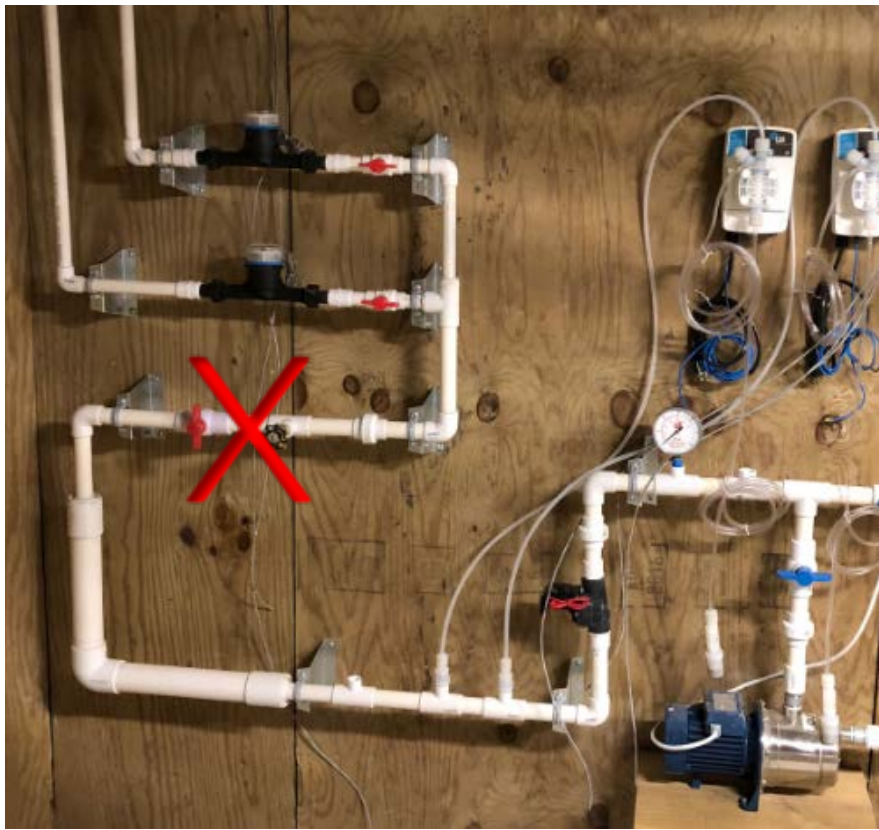
Using a UPR to control water pressure is helpful to maintain constant water pressure in well systems using pressure tanks.

UPR #2205950

Key to success...

**High Volume-Universal
Pressure Regulator
UPR**



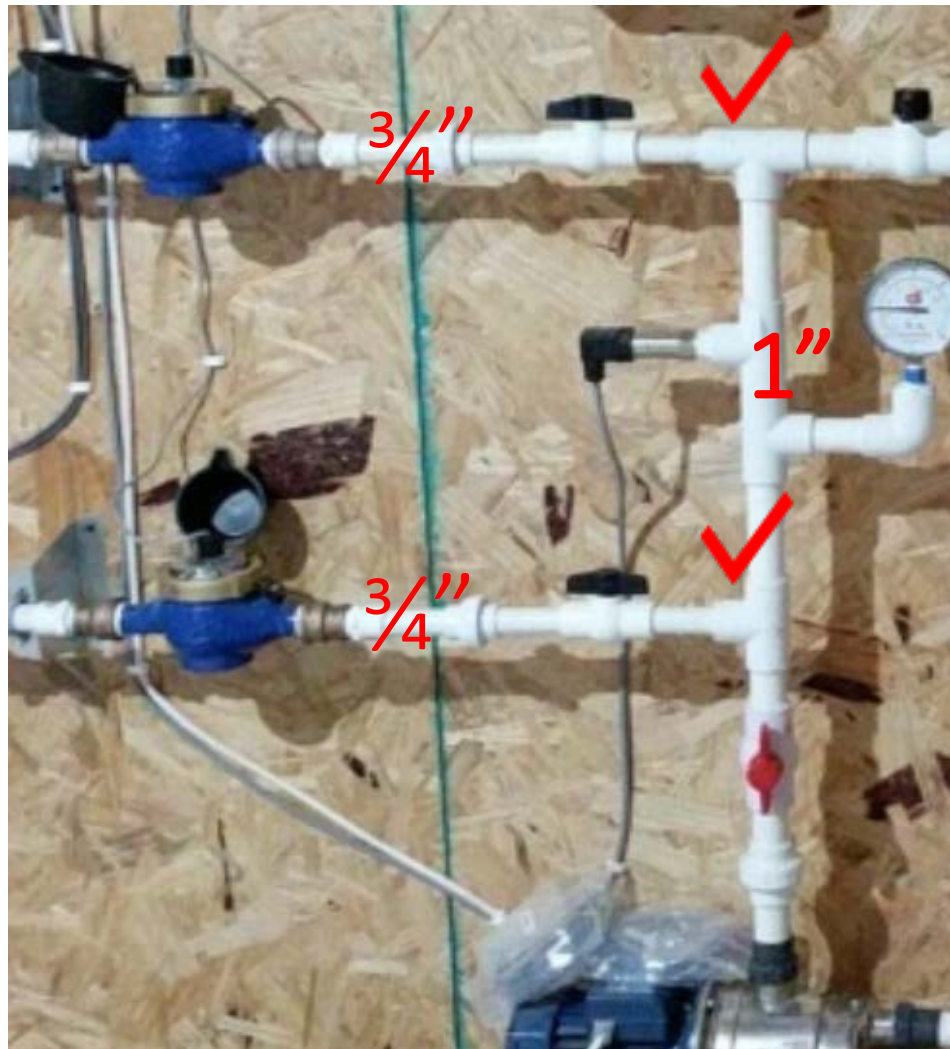


Do not reduce pipe size below 1"

Key to success...

Water on Demand Pro





Feed two - $\frac{3}{4}$ " lines from 1" pipe without reduction nor restrictions



Key to success...

Proper Wiring of WOD Pro:

Wire diagram for Pro and Touch Series Munter Controls

Pro Series & Touch Series

<https://www.diversifiedag.com/downloads/>



Key to success...

Water on Demand
Pro



Wire diagram for Platinum Plus and XL 50

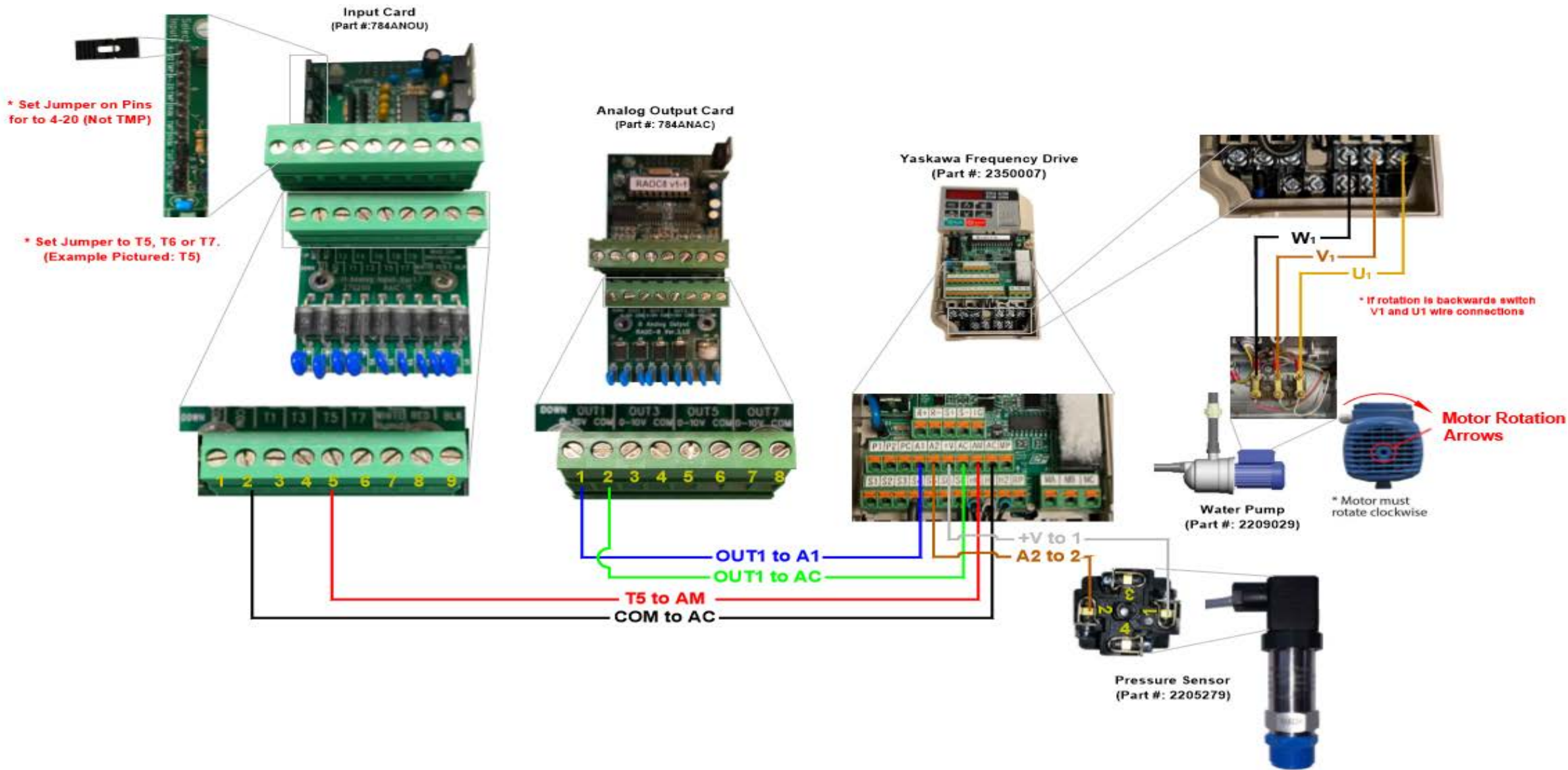
Found at:

<https://www.diversifiedag.com/downloads/>

Key to success...

**Water on Demand
Pro**





Dual system wiring instructions located on website as well



<https://www.diversifiedag.com/downloads/>

Key to success...

Water on Demand
Pro



DIVERSIFIED





Rotem One Controller

Pre-Set Program

WOD Pro

Program control settings

Day of age, time and column height

House 1 21:29 Day 29			
Water On Demand			
Day	Time	Relays	Pressure
		1	
-1	00:00	<input checked="" type="checkbox"/>	12.00
-1	00:01	<input checked="" type="checkbox"/>	4.00
8	02:55	<input checked="" type="checkbox"/>	4.00
8	23:00	<input type="checkbox"/>	0.00
14	02:55	<input checked="" type="checkbox"/>	5.00
14	23:00	<input type="checkbox"/>	0.00
21	02:55	<input checked="" type="checkbox"/>	6.00
21	03:30	<input checked="" type="checkbox"/>	5.00
21	23:00	<input type="checkbox"/>	0.00
0	00:00	<input type="checkbox"/>	0.00

Overview

Devices

Flock

Message

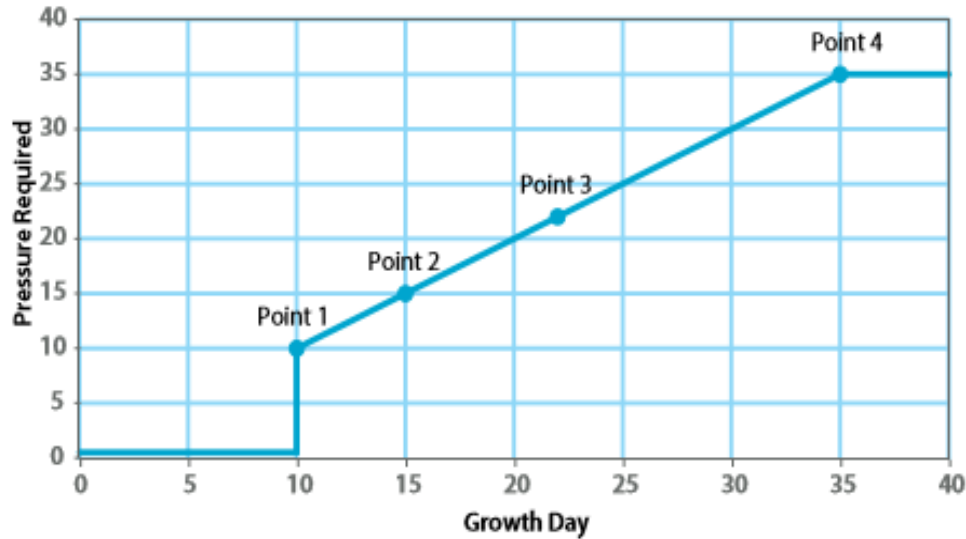
House Menu



Program control settings

Day of age, column height & boost

Growth Day / Required Pressure



Simplified Programing

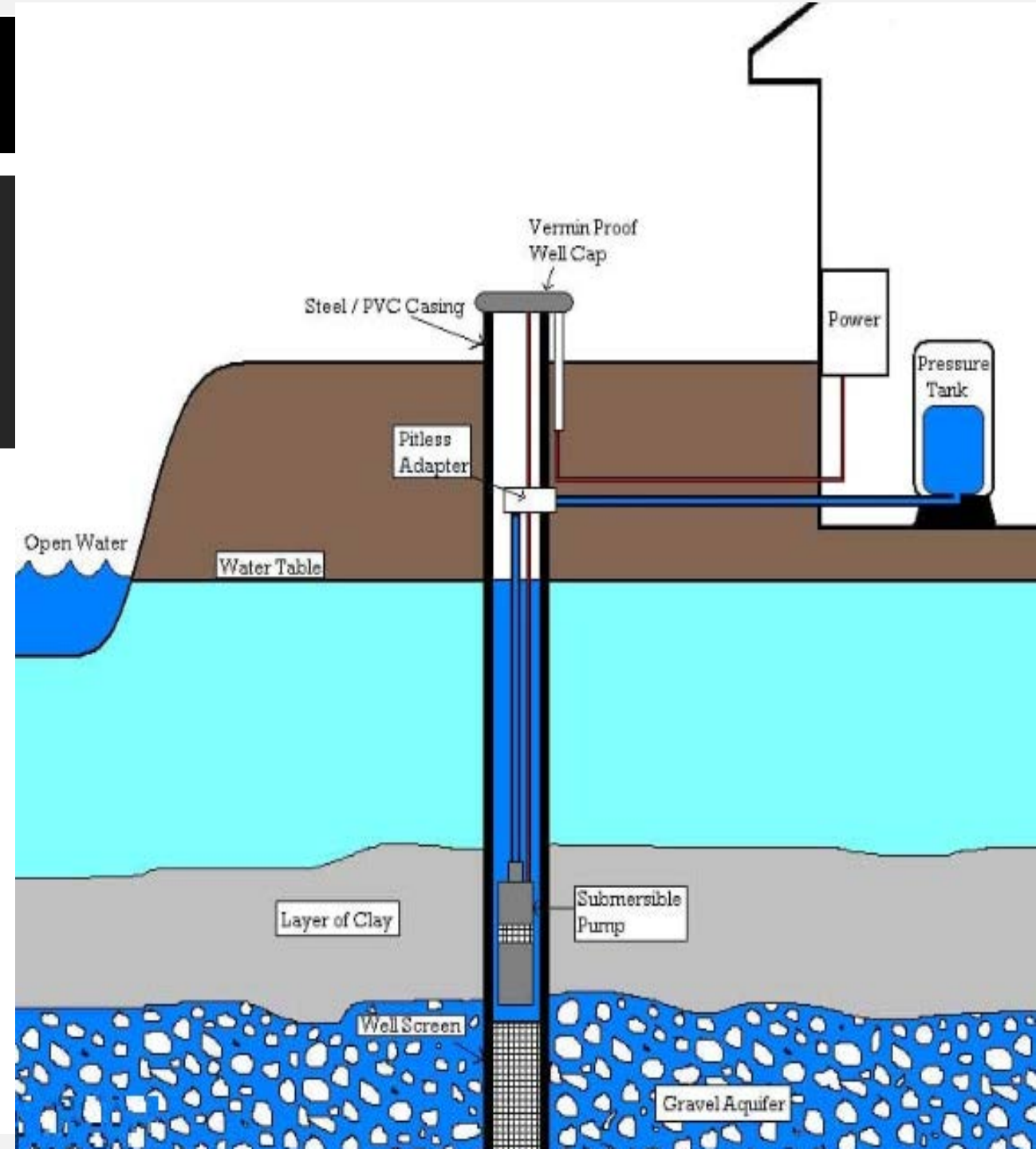
WOD Pro
Stand-Alone

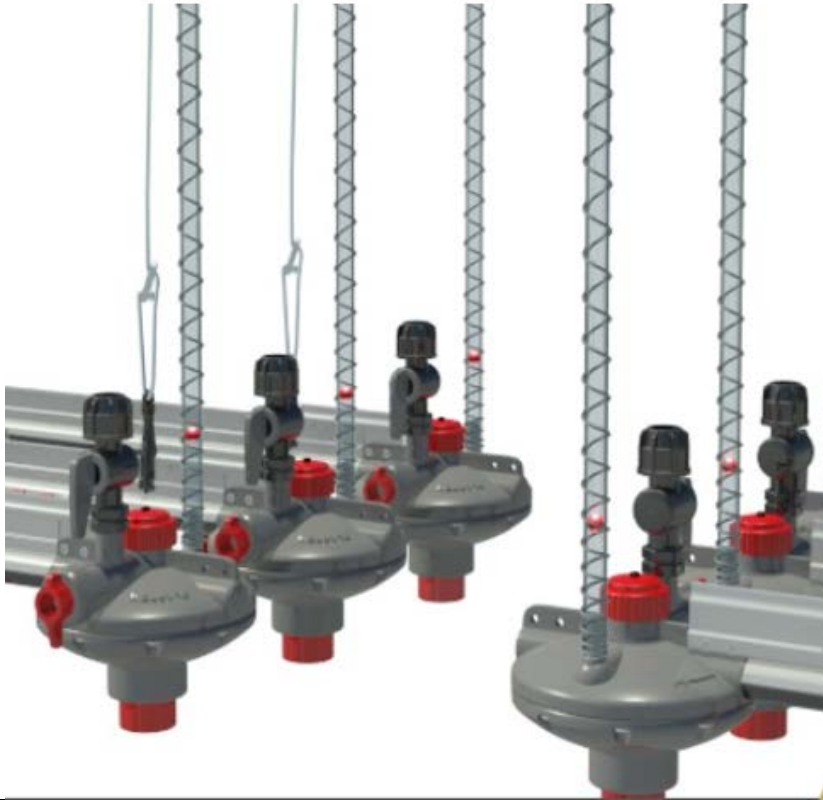


New Farm Construction

All new water service connections must be flushed prior to injecting water into nipple lines.

**All New wells should be flushed 24-48 hours!*

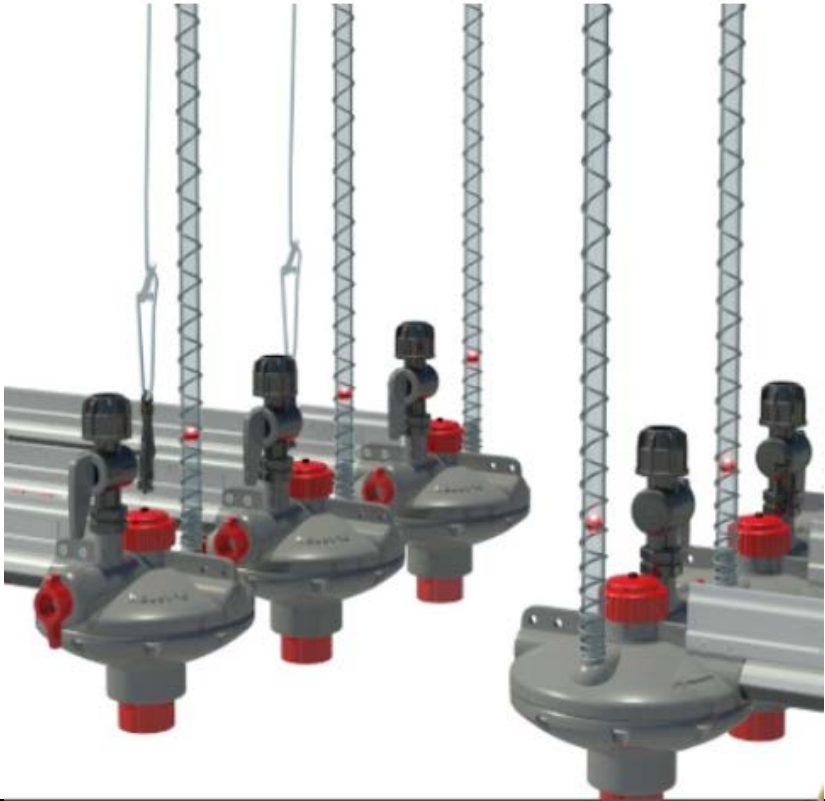




Start-up

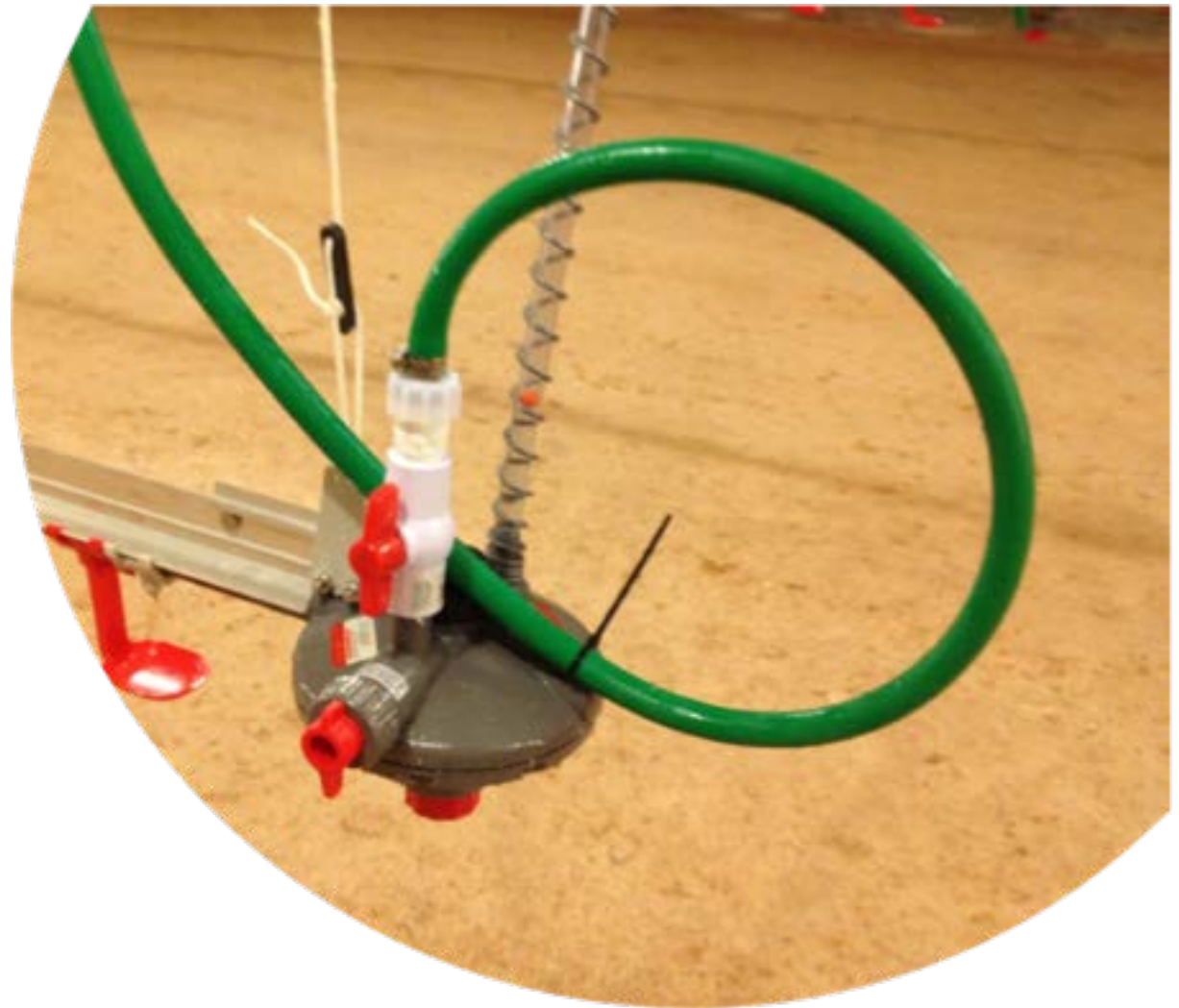
This simple flush procedure will save considerable time in the long run



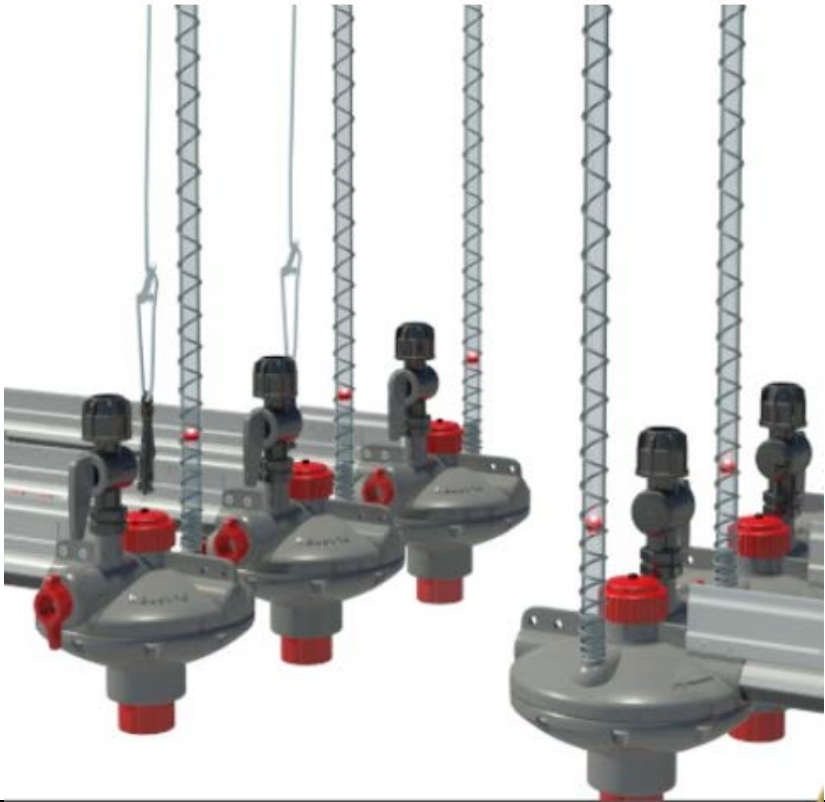


Start-up

Attach drop hoses



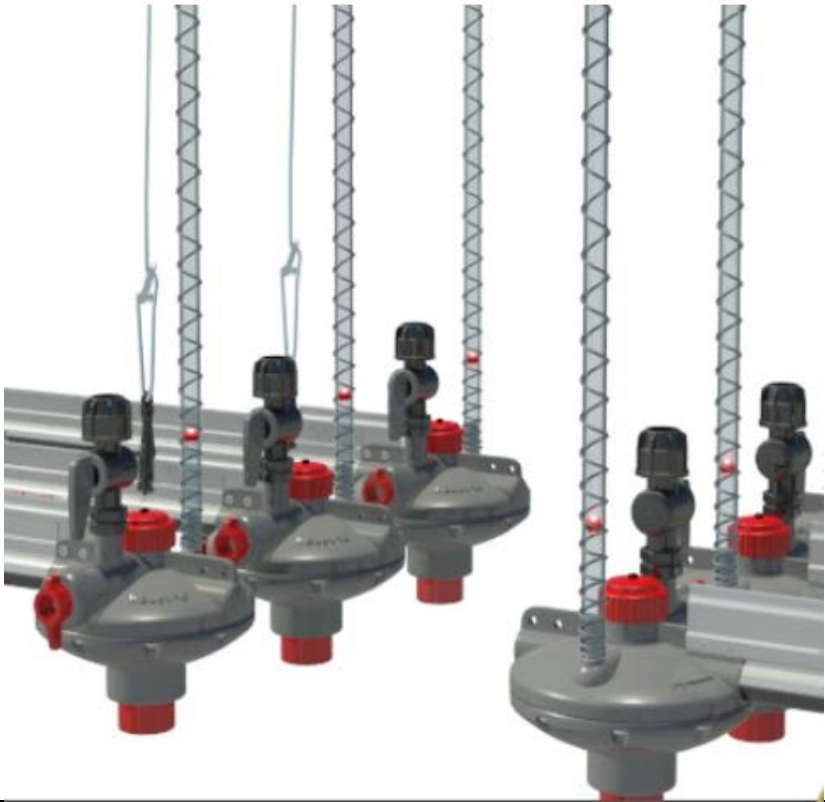
***Proper Garden Hose Loop**
Accounts for excess hose without binding



Start-up

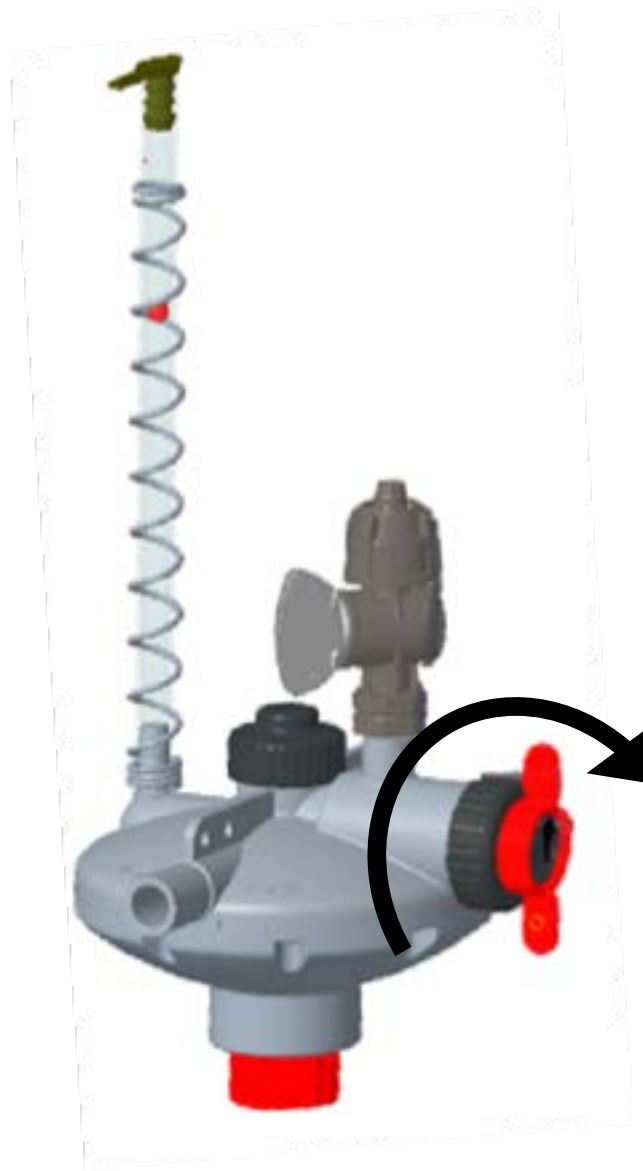
Turn all adjustment knobs
counterclockwise to lowest
pressure setting then add $\frac{1}{2}$ turn

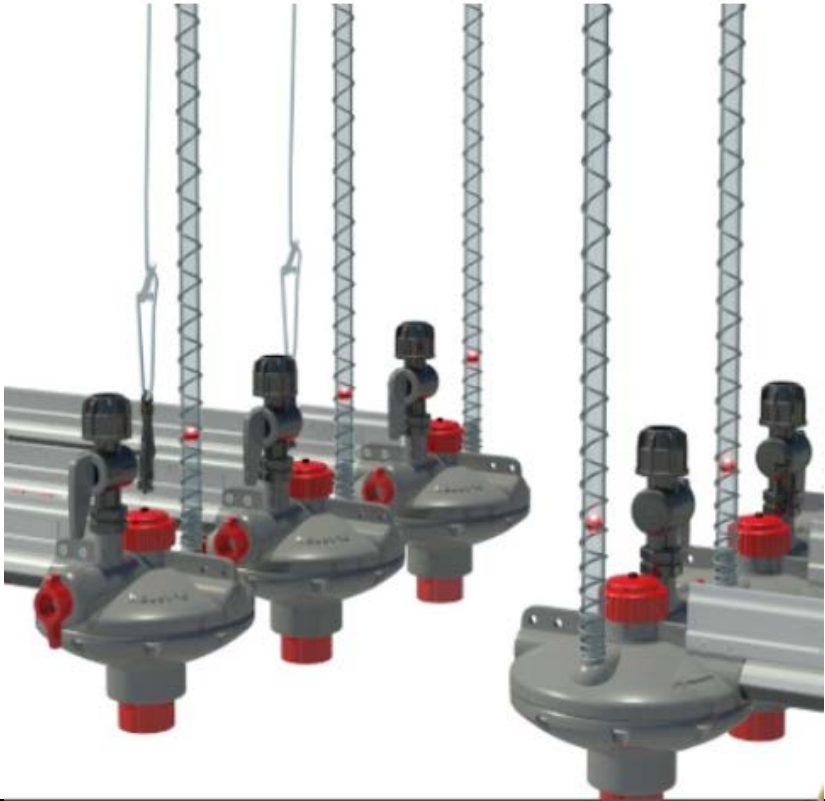




Start-up

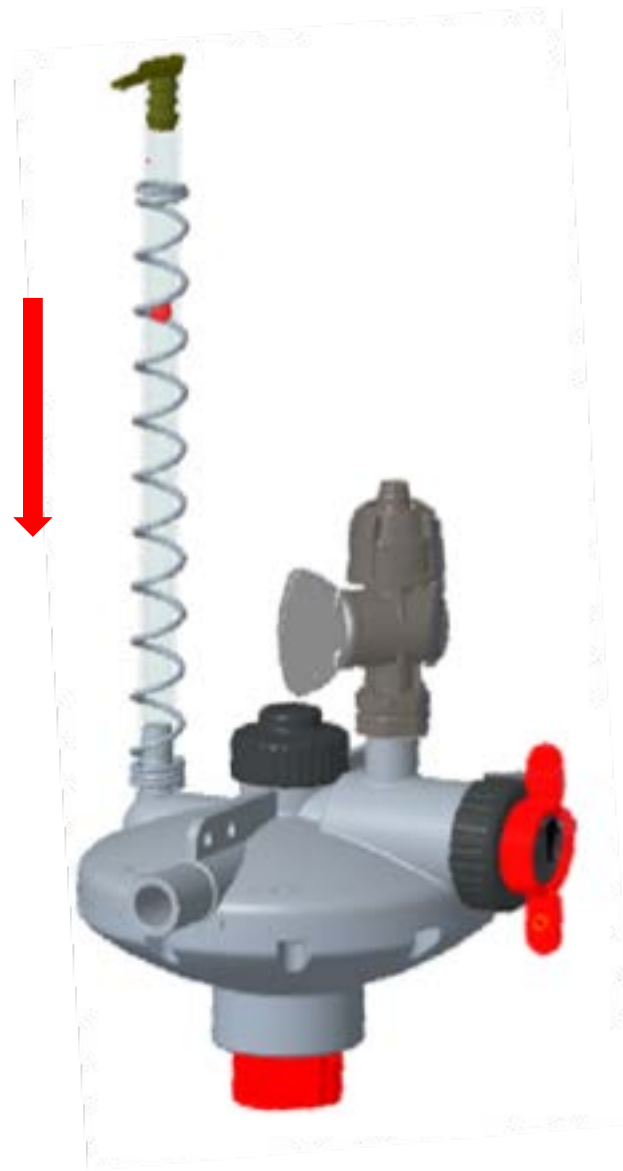
High Pressure Flush
each line





Start-up

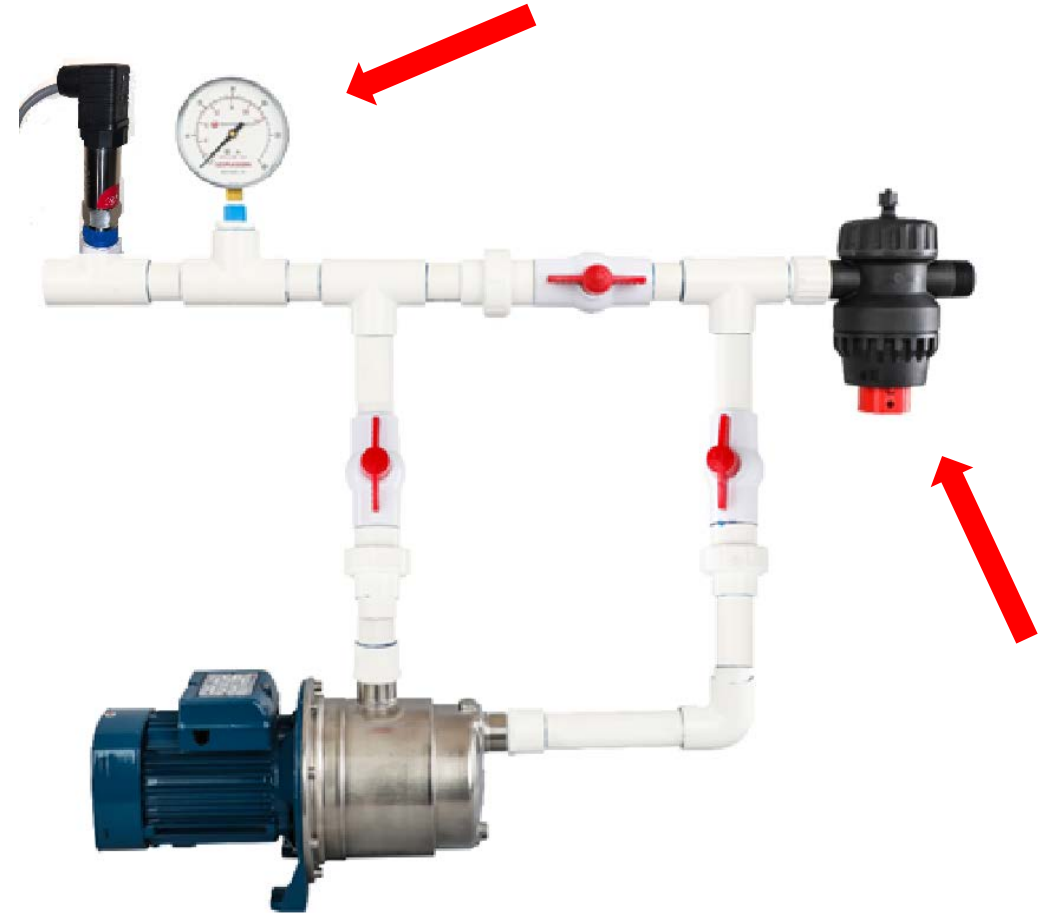
Relieve water pressure
from each line

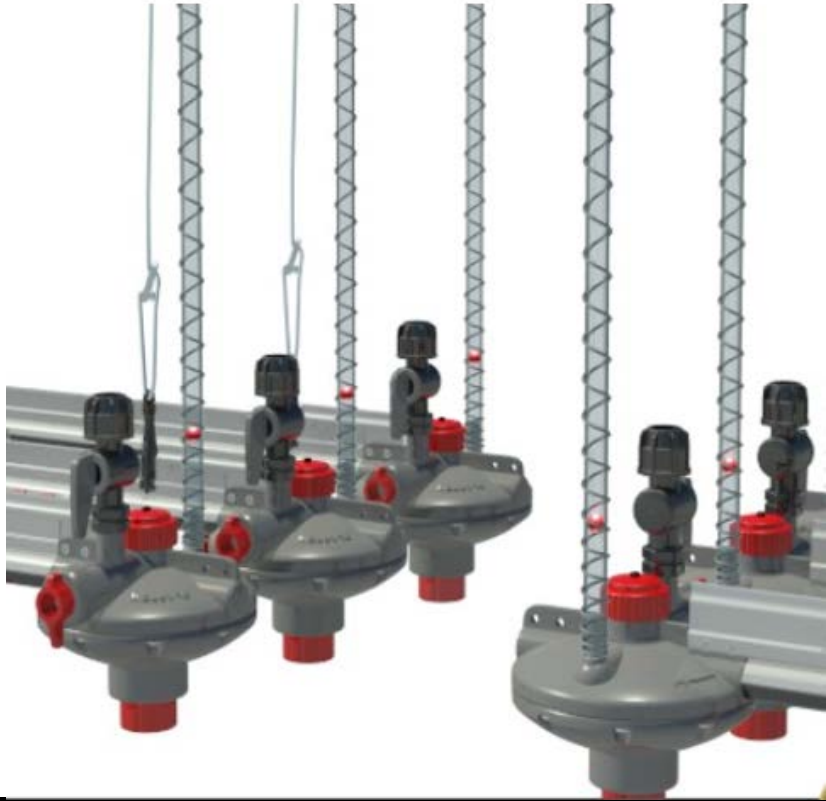




Set-up

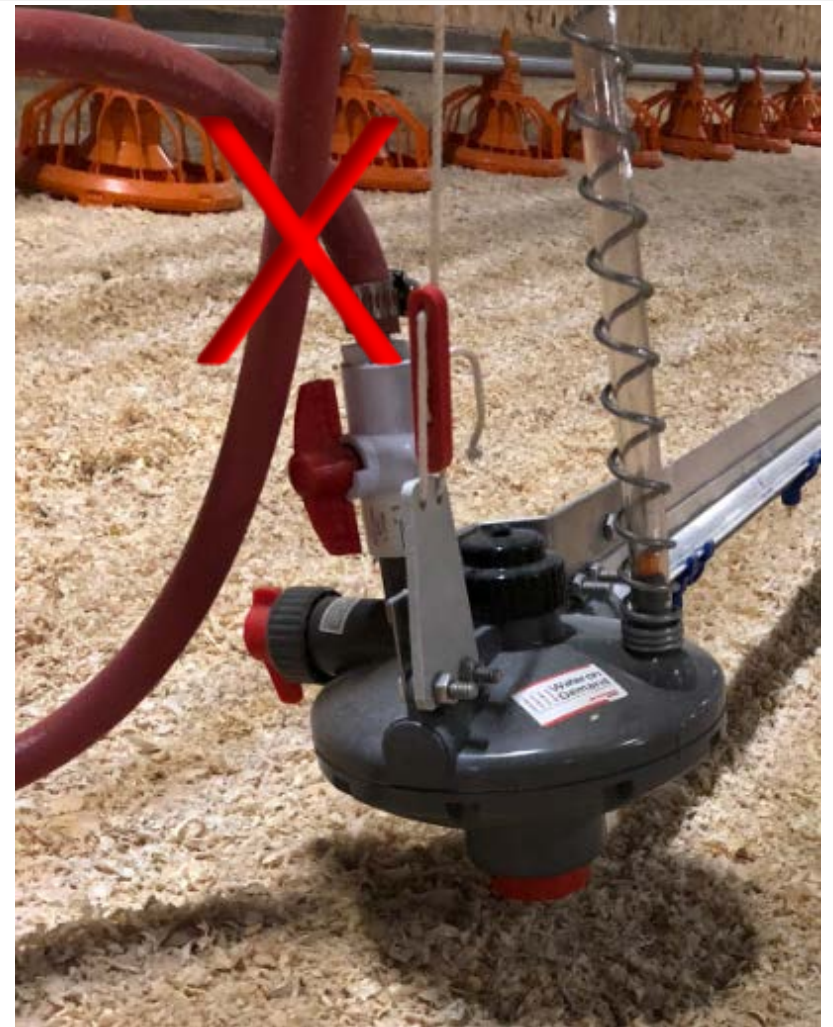
Set UPR pressure 8 psi





Start-up

Do not attach drop hose to pressure reducers until each hose has 5 gallons flushed into a bucket.





Caution

Pressure reducers within the house should never be adjusted after birds achieve 7 days of age or older.

Caution

Control all column height adjustment using the WOD Pro.





Congratulations


Your WOD Pro System has been
installed properly...

Thank You



Keith Gladfelter / Stan Joyner 

1-574-596-0226 / 1-573-820-3560 

kgladfelter@diversifiedag.com 

www.diversifiedag.com 